

TECHNICAL MANUAL

**ORGANIZATIONAL MAINTENANCE REPAIR PARTS
AND SPECIAL TOOLS LISTS
AIR CONDITIONER; VERTICAL COMPACT, FLOOR MOUNTED,
36,000 BTU/HR COOLING, 30,000 BTU/HR HEATING:
208 VOLT, 3 PHASE, 50/60 HERTZ,
(TRANE MODEL MAC 6V40-340-2) FSN 4120-935-5421,
208 VOLT, 3 PHASE, 400 HERTZ
(TRANE MODEL MAC 4V40-340-3) FSN 4120-935-5418**

**This copy is a reprint which includes current
pages from Change 1.**

HEADQUARTERS, DEPARTMENT OF THE ARMY

26 SEPTEMBER 1970

CHANGE
NO. 1

HEADQUARTERS
DEPARTMENT OF THE ARMY
WASHINGTON, D.C., 27 March 1987

Organizational Maintenance Repair Parts and Special Tools Lists

AIR CONDITIONER; VERTICAL COMPACT, FLOOR MOUNTED,
36,000 BTU/HR COOLING, 30,000 BTU/HR HEATING:
208 VOLT, 3 PHASE, 50/60 HERTZ, (TRANE MODEL
MAC 6V40-340-2) FSN 4120-935-5421, 208 VOLT,
3 PHASE, 400 HERTZ (TRANE MODEL MAC 4V40-340-3)
FSN 4120-935-5418

TM 5-4120-268-20P, 26 September 1970, is changed as follows:

Page 4, figure 2, item 8, Col 1, SMR Code is changed to read "PA".

Page 17, figure 14, item 5, Col 1, SMR Code is changed to read "PAOZZ"; Col 3, reference number & MFR Code is changed to read "13214E4002 (97403)" and "Counter Clockwise rotation" is added to the nomenclature.

Page 17, figure 14, item 6, Col 1, SMR Code is changed to read "PAOZZ"; Col 3, reference number & MFR Code is changed to read "1321E4001 (97403)" and "clockwise rotation" is added to the nomenclature.

Page 18, figure 14, item 10, Col 2, NSN is added "3110-00-124-9076"; Col 3, Reference number is changed to read "02-010999-2oz".

Page 35, Section V, Delete Ref No. "D4524-2050", MFR Code "60532", Fig. No. "14", and Item No. "4".

Page 35, Delete Ref No. "FAN296", MFR Code "60532", Fig No. "14" and Item No. "6".

Page 36, Add Ref No. "13214E4002", MFR Code "97403", Fig No. "14" and Item No. "4".

Page 36, Add Ref to "13214E4001" MFR Code "97403", Fig No. "14" and Item No. "6".

By Order of the Secretary of the Army:

JOHN A. WICKHAM, JR.
General, United States Army
Chief of Staff

Official:

R. L. DILWORTH
Brigadier General, United States Army
The Adjutant General

DISTRIBUTION:

To be distributed in accordance with DA Form 12-25A, Organizational Maintenance requirements for Air Conditioner, Floor Mounted, Vertical Compact, 36,000 BTU Cool/30,000 BTU Heat, 208V, 3PH (MAC 4V40-340-3, 400HZ; MAC 6V40-340-2, 50/60HZ)

**ORGANIZATIONAL MAINTENANCE REPAIR PARTS AND
SPECIAL TOOLS LISTS**

**AIR CONDITIONER; VERTICAL COMPACT, FLOOR MOUNTED,
36,000 BTU/HR COOLING, 30,000 BTU/HR HEATING:
208 VOLT, 3 PHASE, 50/60 HERTZ, (TRANE MODEL
MAC 6V4040-2) FSN 4120935-5421, 208 VOLT,
3 PHASE, 400 HERTZ (TRAN'E MODEL MAC 4V40-343)
FSN 4120-935-5418**

Current as of 13 April 1970

	Paragraph	Page
SECTION I. INTRODUCTION		iii
Scope	1	iii
General.....	2	iii
Explanation of columns	3	iii
Special information.....	4	v
How to locate repair parts	5	v
Abbreviations.....	6	vi
Federal supply codes for manufacturers.....	7	vi
Recommendations for maintenance Publications improvement	8	vi
II. PRESCRIBED LOAD ALLOWANCE		1
	Listing Page	Illus Fig
III. REPAIRPARTS FOR ORGANIZATIONAL MAINTENANCE	2	
Group 01. Casing and Related Parts	2	
Casing ,panels ,grilles and mist eliminator.....		1
Damper control, filter, grille, panel & guard.....		2
02. Control Panel and Junction Box	7	
Control panel.....		3
Junction box, transformer and wiring harnesses.....		4
Panel assembly		5
Filter assembly		6
03. Compressor.....	13	
Compressor assembly		7
Compressor electrical components.....		8
05. Refrigeration Components and Condensate Drain	14	
Evaporator, valves, tubes' and fittings.....		10
Condenser, dehydrator, receiver, valves, valves, tubes and fittings		11
06. Heater Assembly	15	
Heater assembly		12
07. Fans and Motors	15	
Condenser fan and motor		13
08. Evaporator fan and motor.....		14
V. Wiring Harnesses		18
SECTION I IV. SPECIAL TOOLS, TEST AND SUPPORT EQUIPMENT (Not Applicable)		
V. FEDERAL STOCK NUMBER AND REFERENCE NUMBER INDEX		34

SECTION I.

INTRODUCTION

1. Scope

This manual lists repair parts, special tools, test and support equipment required for the performance of organizational maintenance of the air conditioners.

2. General

This Repair Parts and Special Tools List is divided into the following sections:

a. *Prescribed Load Allowance (PLA)-Section II.* A composite listing of the repair parts, special tools, test and support equipment having quantitative allowances for initial stockage at the organizational level.

b. *Repair Parts-Section III.* A list of repair parts authorized for the performance of maintenance at the organizational level in figure and item number sequence.

c. *Special Tools, Test and Support Equipment-Section IV.* (Not Applicable).

d. *Federal Stock Number and Reference Number Index-Section V.* A list of Federal Stock Numbers in ascending numerical sequence followed by a list of reference numbers in ascending alpha-numeric sequence, cross-referenced to the illustration figure number and item number.

Note. Items not illustrated are cross-referenced to group number.

3. Explanation of Columns

The following provides an explanation of columns in the tabular lists in sections II, III, and IV:

a. *Source, Maintenance, and Recoverability Codes (SMR).*

(1) Source code indicates the selection status and source for the listed item. Source codes are:

<i>Code</i>	<i>Explanation</i>
P	Repair Parts, Special Tools and Test Equipment supplied from the GSA/DSA, or Army supply system, and authorized for use at indicated maintenance categories.
P2	Repair Parts, Special Tools and Test Equipment which are procured and stocked for insurance purposes because the combat or military essentially of the end item dictated that a minimum quantity be available in the supply system.

<i>Code</i>	<i>Explanation</i>
M	Repair Parts, Special Tools and Test Equipment which are not procured or stocked, as such, in the supply system but are to be manufactured at indicated maintenance levels.
A	Assemblies which are not procured or stocked as such, but are made up of two or more units. Such component units carry individual stock numbers and descriptions, are procured and stocked separately and can be assembled to form the required assembly at indicated maintenance categories.
X	Parts and assemblies that are not procured or stocked because the failure rate is normally below that of the applicable end item or component. The failure of such part or assembly should result in retirement of the end item from the supply system.
X1	Repair parts which are not procured or stocked. The requirement for such items will be filled by the next higher assembly or component.
X2	Repair Parts, Special Tools and Test Equipment which are not stocked and have no foreseen mortality. The indicated maintenance category requiring such repair parts will attempt to obtain the parts through cannibalization or salvage, the item may be requisitioned with exception data, from the end item manager, for immediate use.
G	Major assemblies that are procured with PEMA funds for initial issue only as exchange assemblies at DSU and GSU level. These assemblies will not be stocked above the DS and GS level or returned to depot supply level.
R	Applied to repair parts, (assemblies and components) special tools and test equipment which are considered economically reparable at direct and general support maintenance levels. When the item is no longer economically reparable, it is normally disposed of at the GS level. When supply considerations dictate, some of these repair parts may be listed for automatic return to supply for depot level repair as set forth in AR 710-50. When so listed, they will be replaced by supply on an exchange basis.

<i>Code</i>	<i>Explanation</i>
S	Repair Parts, Special Tools, Test Equipment and assemblies which are economically repairable at DSU and GSU activities and which normal are furnished by supply on an exchange basis. When items are determined by a GSU to be uneconomically repairable, they will be for evaluation and analysis before final disposition.
T	Higher dollar value recoverable repair parts, special tools and test equipment which are subject to special handling and are issued on an exchange basis. Such items will be repaired or overhauled at depot maintenance activities only. No repair may be accomplished at lower levels.
U	Repair Parts, Special Tools and Test Equipment specifically selected for salvage by reclamation units because of precious metal content, critical materials, high dollar value or reusable casings or castings.

(2) Maintenance code indicates the lowest category of maintenance authorized to install the listed item. Repair parts and special tools assigned maintenance code "C" may be stocked at the operator level of maintenance when authorized by the Unit Commander. The maintenance level codes are:

<i>Code</i>	<i>Explanation</i>
C.....	Operator/crew
O.....	Organizational maintenance

(3) Recoverability code indicates whether unserviceable items should be returned for recovery or salvage. Items not coded are expendable. Recoverability codes are:

<i>Code</i>	<i>Explanation</i>
R	Applied to repair parts (assemblies and components) which are considered economically repairable at direct and general support maintenance levels. When the maintenance capability to repair these items does not exist, they are normally disposed of at the GS level. When supply considerations dictate, some of these repair parts may be listed for automatic return to supply for depot level repair as set forth in AR 710-50. When so listed, they will be replaced by supply on an exchange basis.
S	Repair parts and assemblies which are economically repairable at DSU and GSU activities and which normally are furnished by supply on an exchange basis. When items are determined by a GSU to be uneconomically repairable, they will be evacuated to a depot for evaluation and analysis before final disposition.
T	High dollar value recoverable repair parts which are subject to special handling and are issued on an exchange basis. Such repair parts normally are repaired or overhauled at depot maintenance activities.

<i>Code</i>	<i>Explanation</i>
U	Repair parts specifically selected for salvage by reclamation units because of precious metal content, critical materials, or high dollar value reusable casings or castings. <i>b. Federal Stock Number.</i> This column indicates the Federal stock number assigned to the item and will be used for requisitioning purposes. <i>c. Description.</i> This column indicates the Federal item name and any additional description of the item required. Assembly components and subassemblies are indented under major assemblies. The abbreviation "we", when used as part of the nomenclature, indicates the Federal stock number includes all armament, equipment, accessories, and repair parts issued with the item. A part number or other reference number is followed by the applicable five-digit Federal supply code for manufacturers in parenthesis. Repair parts quantities included in kits and sets are shown in front of the repair part name. Material required for manufacture or fabrication is identified.

d. Unit of Measure (U/M). A two-character alphabetic abbreviation indicating the amount or quantity of the item upon which the allowances are based, e.g., ft, ea, pr, etc.

e. Quantity Incorporated in Unit. This column indicates the quantity of the item used in the assembly group. A "V" appearing in this column in lieu of a quantity indicates that a definite quantity cannot be indicated (e.g., shims, spacers, etc.)

f. Fifteen-Day Organizational -Maintenance Allowance.

(1) The allowance columns are divided into four subcolumn. Indicated in each subcolumn opposite the first appearance of each item is the total quantity of items authorized for the number of equipment supported. Subsequent appearances of the same item will have the letters "REF" in the allowance column. To locate the referenced item, locate the FSN or reference number in the index. The earliest figure and item number is the referenced item. Items authorized for Use as required but not for initial stockage are identified with an asterisk in the allowance column.

(2) The quantitative allowance for organizational level of maintenance represents one initial prescribed load for a 15-day period for the number of equipment supported. Units authorized additional prescribed loads, multiple the number of prescribed loads by the quantity in the appropriate density column to determine the number of repair parts authorized.

(3) To determine allowances when supporting more than 100 of these equipment: First, divide the number of equipment supported by 100 by moving the decimal two spaces left; second, multiply the result by the quantity in the 51-100 density column. Example; authorized allowance for 51-100 equipment is 40; for 150 equipment, multiply 40 by 1.50 or 60 parts authorized.

(4) Subsequent changes to allowances will be limited as follows: No change in the range of items is authorized. If additional items are considered necessary, recommendation should be forwarded to U. S. Army Mobility Equipment Command for exception or revision to the allowance list. Revisions to the range of items authorized will be made by the U. S. Army Mobility Equipment Command based upon engineering experience, demand data, or TAERS information.

g. Illustration. This column is divided as follows:

(1) *Figure number.* Indicates, the figure number of the illustration in which the item is shown.

(2) *Item number.* Indicates the callout number used to reference the item in the illustration.

4. Special Information

a. Identifications of the usable on codes included in the description columns of this publication are: (Applicable only when identifying parts to particular serial number range, or model).

<i>Code</i>	<i>Used on</i>
A	Model MAC 6V40 3402
B	Model MAC 4V40-340-3

b. Repair parts mortality has been based on 7200 hours of operation per year.

a. Parts which require manufacture or assembly at a category higher than that authorized for installation will indicate in the source column the higher category.

d. The following publication pertains to the Air Conditioners and their components.

TM 5-4120-268-15	Operator, Organizational, DS, GS, and Depot Maintenance Manual
------------------	--

e. The illustrations in this manual are identical to the applicable illustrations published in the -35P, Direct and General Support and Depot Maintenance Repair Parts and Special Tools List manual, and the figure numbers are the same as appear in that manual. The -35P illustrations are given for a better understanding of the parts relationship, however, only those parts assigned maintenance code "O" are listed in the tabular portion

and only these parts are authorized for requisitioning from this manual.

5. How to Locate Repair Parts

a. When Federal Stock Number or Reference Number is Unknown:

(1) *First.* Using the table of contents, determine the assembly group within which the repair part belongs. This is necessary since illustrations are prepared for assembly groups and listings are divided into the same groups.

(2) *Second.* Find the illustration covering the assembly group to which the repair part belongs.

(3) *Third.* Identify the repair part on the illustration and note the illustration figure and item number of the repair part.

(4) *Fourth.* Using the Repair Part Listing, find the assembly to which the repair part belongs and locate the illustration figure and item number noted on the illustration.

b. When the Federal Stock Number or Reference Number is Known:

(1) *First.* Using the Index of Federal Stock Numbers and Reference Numbers find the pertinent Federal stock number or reference number'. This index is in ascending FSN sequence followed by a list of reference numbers in alpha-numeric sequence, cross-referenced to the illustration figure number and item number.

(2) *Second.* Using the Repair Part Listing, find the assembly group of the repair part and the illustration figure number and item number referenced in the Index of Federal Stock Numbers and Reference Numbers.

c. When the Federal Stock Number or Reference Number is Known and the Repair Part is not Illustrated.

(1) *First.* Using the Index of Federal Stock Numbers and Reference Numbers find the pertinent Federal stock number or reference number in the section titled "Items Not Illustrated" and note the group number. This section of the index is in ascending FSN sequence followed by a list of reference numbers in alpha-numeric sequence cross-referenced to assembly group number.

(2) *Seconds.* Using the Table of Contents, locate the assembly group number and page number.

(3) *Third.* Using the applicable group number and page number locate the pertinent

stock number or reference number in the Repair Parts Listing. Items which are not illustrated are listed at the end of the assembly group to which they belongs.

6. Abbreviations

- ampamperes
- assyassembly
- dia.....diameter
- hex.....hexagon
- hd.....head
- id.....inside diameter
- in.....inch (es)
- lg.....long (length)
- mtg.mounting
- od.....outside diameter
- thd.....thread
- thk.....thick (ness)

7. Federal Supply Codes for Manufacturers

<i>Code</i>	<i>Manufacturer</i>
06151	Dialtron Corp
12881.....	Metex Corp
15605.....	Cutler-Hammer, Inc.
15653.....	Kaynar Mfg Co.
22694.....	Reid Hill Electronic, Inc.
31234.....	Ed Sales, Inc.
56289.....	Sprague Electric Co.
58849.....	Syntron Co.
60532.....	Trane Co., The
61957.....	United Shoe Machinery Corp
64731.....	Welco Industries, Inc.
71296.....	Camloc Fastener Corp
71400.....	Bussman Mfg Division of McGraw-Edison Co.
74193.....	Heinemann Electric Co.
75382.....	Kulka Electric Corp
78189.....	Shakeproof Division of Illinois Tool Works, Inc.

<i>Code</i>	<i>Manufacturer</i>
78553	Tinnerman Products, Inc.
79499	Western Felt Works
80205	National Aerospace Standards Committee Industries Association of America
81349	Military Specifications Promulgated by Standardization Div Directorate of Logistic Services DSA
82646	Spencer Safford Loadcraft, Inc.
82647	Metals and Controls, Inc., Control Products Group
86797	Rogan Co.
88044	Aeronautical Standards Group, Dept. Of Navy and Air Force
90768	United Carr Fastener Corp.
92578	Pen Controls Inc.
93232	Worthington Corp.
93781	Jackes Evens Manufacturing Co.
94222	South Chester Corp.
96906	Military Specifications Promulgated by Standardization Div Directorate of Logistic Services DSA

8. Recommendations for Maintenance Publication Improvements

Report of errors, omissions, and recommendations for improving this publication by 'the individual user is encouraged. Reports should be submitted on DA Form 2028 (Recommended Changes to Publications) and forwarded direct to Commanding General, U. S. Army Mobility Equipment Command, AITN: AMSME-MPP, 4300 Goodfellow Boulevard, St. Louis, Mo. 63120.

(1) FEDERAL STOCK NUMBER	(2) DESCRIPTION USABLE ON CODE	(3) 15-DAY ORG. MAINT. ALLOWANCE			
		(a)	(b)	(c)	(d)
		1-5	6-20	21-50	51-100
	SECTION II - PRESCRIBED LOAD ALLOWANCE				
	GROUP 01 - CASING AND RELATED PARTS				
4130-193-8488	FILTER, RETURN AIR AL18-4-5 (31234)			2	2
4130-938-0974	FILTER, FRESH AIR AL27812-5 (31234)			2	2
	GROUP 02 - CONTROL PANEL AND JUNCTION BOX				
5920-280-3175	FUSE F09B250V16-10A (81349)			2	2
5920-939-5442	FUSE KAW5(71400)			2	2
5945-976-3007	RELAY, THERMAL TIME DELAY FR30SNO-24 (06151)				2
	RELAY, SOLENOID: 25 AMP 9565H2B (15605)				2
	GROUP 07 - FANS AND MOTORS				
6105-253-5519	MOTOR, EVAPORATOR FAN: 60 CYCLE 926303 (64731)	A			2
6105-253-5520	MOTOR, EVAPORATOR FAN: 400 CYCLE 715-22 (64731)	B			2
6105-401-4616	MOTOR, CONDENSER FAN: 60 CYCLE 7015-4 (64731)	A			2
	MOTOR, CONDENSER FAN: 400 CYCLE 7025-6 (64731)	B			2
	1				

(1) SMR CODE	(2) FEDERAL STOCK NUMBER	(3) DESCRIPTION Reference Number and MFR CODE USABLE ON CODE		(4) UNIT OF MEAS	(5) QTY INC IN UNIT	(6)				(7)	
						(a) 1-5	(b) 6-20	(c) 21-50	(d) 51-100	(a) FIG NO	(b) ITEM NO
		SECTION III - ORGANIZATIONAL MAINTENANCE			REPAIR PARTS FOR						
		GROUP 01 - CASING AND RELATED PARTS									
P 0	5305-984-6194	SCREW, MACHINE: NO. 8-32 THD SIZE, 5/8 IN. LG MS35206-246 (96906)		EA	39	*	*	*	*	1	1
P 0	5310-011-4986	WASHER, FLAT: NO. 8 SCREW SIZE MS27183-7 (96906)		EA	72	*	*	*	*	1	2
X20		TRNLOCK, FASTENER: CANYAS COVER MTG XX78328-20 (90763)		EA	2					1	3
X20		PANEL ASSEMBLY TOP C4525-549(60532)		EA	1						1
P 0		RIVET, BLIND AK41H (61957)		EA	20	*	*	*	*	1	4
X20		NUT, SELF-LOCKING: PLATE F39155-08 (15653)		EA	10					1	5
X20		NUT, SELF-LOCKING: PLATE, FASTENER MTG, NO. 10-32 THD SIZE F39155-3 (15653)		EA	2					1	6
X1		PANEL B4525-537-7-1 (60532)		EA	1					1	7
M O		INSULATION: PANELS, CASING C4525-326-1 (60532)		EA	V					1	8
		MANUFACTURE FROM: INSULATION, SHEET, 1/2 IN. THK, AS REQUIRED, FSN 5640-785-7788									
M O		INSULATION: PANEL MANUFACTURE FROM: INSULATION, SHEET, 5/16 IN. TWK AS REQUIRED, FSN 5640-198-7255								1	9
P 0	5305-984-6195	SCREW, MACHINE: NO. 8-32 THD SIZE, 3/4 IN. LG MS35206-247 (96906)		EA	24	*	*	*	*	1	10
X20		GRILLE ASSEMBLY, DISCHARGE A4525-03 (60532)		EA	1					1	11
M O		GASKET, RUBBER PANELS GRILLES C4525-703-2 (605321)		EA	V					1	2
		MANUFACTURE FROM: ROLL, RUBBER, 1/8 IN. X 1 IN. AS REQUIRED, FSN 9320-935-2036									
P 0		MIST ELIMINATOR E4525-770 (60532)		EA	1	*	*	*	*	1	13
X20		GRILLE ASSEMBLY. INTAKE A4525-400 (60532)		EA	1					1	11
X20		PANEL ASSEMBLY: LOWER FRONT B4525-394 (60532)		EA	1					1	
X20	5305-984-7441	SCREW ASSEMBLY 12-11-613-12 (94222)		EA	3					1	15
X20		WASHER, RETAINING: PANEL MTG 12-11614-12 (94222)		EA	5					1	16
X20		SCREW ASSEMBLY PANEL MTG 12-11-504-12 (94222)		EA	2					1	17
X20		PLATE, HOLDING: INSULATION BOARD D4525-231-1 (60532)		EA	1					1	18

(1) SMR CODE	(2) FEDERAL STOCK NUMBER	(3) DESCRIPTION Reference Number and MFR CODE USABLE ON CODE		(4) UNIT OF MEAS	(5) QTY INC IN UNIT	(6)				(7)	
						(a) 1-5	(b) 6-20	(c) 21-50	(d) 51-100	(a) FIG NO	(b) ITEM NO
X20		INSULATION BOARD C4525-392-1 (60532)		EA	1					1	19
X20		INSULATION BOARD C4525-391-1 (60532)		EA	1					1	20
X1		PANEL B4525-393-1 (60532)		EA	1					1	21
X20		BAFFLE ASSEMBLY: LOWER FRONT PANEL C4525-124 (60532)		EA	1					1	
X20		TURNLOCK FASTENER 40537-7 (71286)		EA	4					1	22
X1		BAFFLE D4525-123-1 (60532)		EA	1					1	23
X20		EYELET 4002N (71286)		EA	4					1	24
X20		RING, RETAINING R4G (71286)		EA	4					1	25
X20		RECEPTACLE, TURNLOCK FASTENER 244-16 (71286)		EA	4					1	26
P 0	5305-984-6193	SCREW, MACHINE: SCREEN SUPPORT MTG, NO. 8-32 THD SIZE, 1/2 IN. LG MS35206-245 (96906)		EA	5	*	*	*	*	1	27
P 0	5310-045-3299	WASHER, LOCK: NO. 8 SCREW SIZE MS35338-42 (96906)		EA	5	*	*	*	*	1	28
X20		ANGLE5 FILTER SUPPORT C4525-524-1 (60532)		EA	1					1	29
P 0	4130-193-8488	FILTER, RETURN AIR AL18-4-5 (31234)		EA	1	*	*	2	2	1	30
P 0	5305-989-7435	SCREW, MACHINE: BAFFLE MTG, NO. 10-32 THD SIZE, 5/8 IN. LG MS35267-264 (96906)		EA	10	*	*	*	*	1	32
P 0	5310-045-3296	WASHER, LOCK: BAFFLE MTG, NO. 10 SCREW SIZE MS35338-43 (96906)		EA	10	*	*	*	*	1	33
P 0	5310-809-8546	WASHER, FLAT: BAFFLE MTG, NO. 10 SCREW SIZE MS27183-8 (96906)		EA	10	*	*	*	*	1	34
X20		BAFFLE: LH B4525-316-1 (60532)		EA	1					1	35
X20		BAFFLE: RH B4525-317-1 (60532)		EA	1					1	35
X20		RING, INLET: EVAPORATOR FAN C4525-689_1 (60532)		EA	2					1	36
P 0	5306-225-9089	SCREW, CAP, HEXAGON HEAD: SUPPORT MTG, 5/16-24 THD SIZE, 1 IN. LG MS9072S34 (96906)		EA	4	*	*	*	*	1	37
P 0	531-081-4219	WASHER, FLAT: SUPPORT MTG, 5/16 IN. SCREW SIZE MS27183-12 (96906)		EA	4	*	*	*	*	1	38
X20		SHIM, ADJUSTING: EVAPORATOR FAN MOTOR, .063 IN. THK C4525-761-1 (60532)		EA	2					1	39
X20		SHIM, ADJUSTING: EVAPORATOR FAN MOTOR, .032 IN. THK C4525-761-2 (60532)		EA	2					1	40
X20		SUPPORT: EVAPORATOR FAN MOTOR B4525-525 (60532)		EA	1					1	41

(1) SMR CODE	(2) FEDERAL STOCK NUMBER	(3) DESCRIPTION Reference Number and MFR CODE	(4) UNIT OF MEAS	(5) QTY INC IN UNIT	(6)				(7)	
					(a) 1-5	(b) 6-20	(c) 21-50	(d) 51-100	(a) FIG NO	(b) ITEM NO
P 0		PLUG, PIPE: BASE, DRAIN, 1/2 IN. SOCKET HEAD PLV128 (60532)	EA	4	*	*	*	*	1	55
P 0	4130-469-6758	BLOCK OFF ASSEMBLY: COOL PANEL APERTURE, LOWER FRONT PANEL B4525-24921 (60532)	EA	1					1	
P 0	5310-889-2544	NUT, SELF-LOCKINGI HEXAGON COVER MTG,NO. 6-32 THD SIZE MS2100(969D6)	EA	8	*	*	*	*	1	56
P 0	5305 889-3000	SCREW, MACHINE: COVER MTG, NO. 6-32 THD SIZE, 1/2 IN. LG MS35206-230 (9690S)	EA	8	*	*	*	*	1	57
X20		COVER B4525-196-3 (60532)	EA	1					1	58
X20		COVER B4525-196-2 (60532)	EA			1			1	59
X1		RACKET, QLOCK OFF C4525-241-21 (60532)	EA	1					1	60
P 0	5305-984-6194	SCREW, MACHINE: NO. 8-32 THD SIZE, 5/8-IN. LG MS35206-246 (96906)	EA	68	*	*	*	*	2	1
X20		COVER ACCESS EVAPORATOR FAN MOTOR D525-128-2 (60532)	EA	1					2	2
X20		COVER CARBURETOR: FILTER ACCESS 525-128-1 (60532)	EA	1					2	3
P 0	5310-045-3299	WASHER, LOCK: NO. 8 SCREW SIZE MS35338-42 (96906)	EA	10	*	*	*		2	4
X20		FRAME. FILTER: FRESH AIR B4525-749 (60532)	EA	1					2	5
P 0	4310-938-0974	FILTER, FRESH AIR AL27-88-12-5 (31234)	EA	1	*	*	2	2	2	6
P 0	5310-011-4986	WASHER, FLAT: NO. 8 SCREW SIZE NS27183-7 (96906)	EA	12	*	*	*	*	2	7
X20		SCREEN, CONDENSER C4525-417-1 (60532)	EA	1					2	8
P 0	5310-811-3494	NUT, SELF-LOCKING: HEXAGON GUARD MTG, NO. 8-32 THD SIZE MS21044NO8 (96906)	EA	6					2	9
X20		GUARD CONDENSER FAN A525-229-1 (60532)	EA	1					2	10
X20		BACK PANEL AND MOTOR SUPPORT: CONDENSER FAN MOTOR E4525-617 (60532)	EA	1					2	11
P 0		5310-889-2544 NUT, SELF-LOCKING: HEXAGON, COVER MTG, NO. 6-32 THD SIZE MS21045-06 (96906)	EA	16					2	12
P 0	5305-889-3001	SCREW, MACHINE: COVER NTG, NO. 6-32 THD SIZE, 1/2 IN. LG MS35206-230 (96906)	EA	16					2	13
X20		COVER ACCESS: CASING B525-196-3 (60532)	EA	4					2	14
X20		CONTROL ASSEMBLY, DAMPER 84525-539 (60532)	EA	1					2	
P 0	5310-061-7325	NUT, SELF-LOCKING: HEXAGON, 1/4-28 THD SIZE MS21045-4 (96906)	EA	3					2	15

(1) SMR CODE	(2) FEDERAL STOCK NUMBER	(3) DESCRIPTION Reference Number and MFR CODE	(4) UNIT OF MEAS	(5) QTY INC IN UNIT	(6)				(7)	
					(a) 1-5	(b) 6-20	(c) 21-50	(d) 51-100	(a) FIG NO	(b) ITEM NO
X20		WASHER, FLAT: 1/4 IN. ID, .518 IN. OD B4525-307-24 (60532)	EA	3					2	16
P O		BOLT SHOULDER: ARM MTG, 1/4-28 THD SIZE, .713 IN. LG NAS1297-4- (80205)	EA	1	*	*	*	*	2	17
P O	5305-175-3230	SCREW, DRIVE: DAMPER CONTROL PLATE MS21318-14 (96906)	EA	4	*	*	*	*	2	18
X20		PLATE, INSTRUCTION: DAMPER C4525-208-1 (60532)	EA	2					2	19
P O	5305-7241-6799	SETSCREW: KNOB, NO. 10-32 THD SIZE, 3/8 IN. LG, CUP POINT MS5196,4-51 (96906)	EA	2	*	*	*	*	2	20
X20		KNOB, DAMPER CONTROL C4525-228-1 (60532)	EA	2					2	21
P O	5315-663-2329	PIN, SPRING: WORM, 3/32 IN. DIA, 11/16 IN. LG MS171499 (96906)	EA	1	*	*	*	*	2	22
P O	5310-081-4219	WASHER, FLAT: WORM MTG, 5/16 IN. SCREW SIZE MS27183-12 (96906)	EA	2	*	*	*	*	2	23
X20		WASHER, SPRING: WORM AND GEAR MTG, 5/8 IN. OD, 5/16 IN. ID, .020 IN. THK 3502-18-365 (78189)	EA	3					2	24
X20		ROD LINKAGE D4525-493-2 (60532)	EA	1					2	25
P O	5310-061-7326	NUT, SELF-LOCKING: HEXAGON, GEAR HOUSING, NO. 10-32 THD SIZE M521045-3 (96906)	EA	4	*	*	*	*	2	26
P O	5310-809-8546	WASHER, FLAT: NO. 10 SCREW SIZE MS27183-8 (96906)	EA	12					2	27
P O	5305-989-7435	SCREW, MACHINE: HOUSING MTG, NO. 10-32 THD SIZE 5/8 IN. LG MS35207-264 (96906)	EA	1	*	*	*	*	2	28
X1		HOUSING, GEAR D1525-579 (60532)	EA	1					2	29
X20		ARM, LINKAGE D4525-533-1 (60532)	EA	1					2	30
P O		BOLT SHOULDER: ARM MTG, 1/4-28 THD SIZE, .813 IN. LG NAS1297-4-6 (80205)	EA	1	*	*	*	*	2	31
X20		SPACER: ROD MTG D4525-794-1 (60532)	EA	2					2	32
P O	5305-267-8985	SCREW, CAP, HEXGCON: HOUSING, 1/4-28 THD SIZE, 3 IN. LG MS90726-18 (96906)	EA	1	*	*	*	*	2	33
X20		GEAR AND LEVER ASSEMBLY C4525-535 (60532)	EA	1					2	34
X1		GEAR, WRM D4152-6038-1 (60532)	EA	1					2	35
P O	5310-889-2549	NUT, SELF-LOCKING: HEXAGON, DOOR MTG, NO. 8-32 THD SIZE Ms210115-08 (96906)	EA	8	*	*	*	*	2	36
X20		DOOR ASSEMBLY: DAMPER B425-538 (60532)	EA	1					2	37
P O	5305-9874314	SCREW, MACHINE: COVER MTG, NO. 10-32 THD SIZE, 1/2 IN. LG MS35207-263 (96906)	EA	20	*	*	*	*	2	38

(1) SMR CODE	(2) FEDERAL STOCK NUMBER	(3) DESCRIPTION Reference Number and MFR CODE USABLE ON CODE		(4) UNIT OF MEAS	(5) QTY INC IN UNIT	(6)				(7)	
						(a) 1-5	(b) 6-20	(c) 21-50	(d) 51-100	(a) FIG NO	(b) ITEM NO
X20		COVER DAMPER DOOR C4525-T62-1 (60532)		EA	2					2	39
X20		GROMMET: ROD MTG G1152 (79499)		EA	1					2	40
X20		HANDLE, LIFTING B4525-2)4-1 (60532)		EA	2					2	41
X20		COVER, CANVAS: CASING, REAR A4525-261 (60532)		EA	1						
X20		PLATE, IDENTIFICATION: CHECK TEMPLATE, BRAKE, REAR D4525-141-1 (60532)		EA	1						
X20		PLATE, INSTRUCTION: DANGER, FAN GUARD C4525-209-1 (60532)		EA	1						
X20		PLATE, INSTRUCTION: CUTOUT C4525-211-1 (60532)		EA	1						
X20		PLATE, INSTRUCTION: ELECTRICAL C4525-220-1 (60532)	A	EA	1						
X20		PLATE INSTRUCTION: ELECTRICAL C 525-221-1 (60532)	B	EA	4						
X20		PLATE INSTRUCTION: CHARGE C4525-768-1 (60532)		EA	1						
X20		PLATE, INFORMATION: WEIGHT C4525-767-1 (60532)	A	EA	1						
X20		PLATE INFORMATION: WEIGHT C4525-765-1 (60532)	B	EA	1						
P 0		5320-932-1972 RIVET, BLIND: CHECK TEMPLATE BRAKE, REAR ACCESS PLATE AD42H (61957)		EA	2	*	*	*	*		
P 0	5320-882-8388	RIVET, BLIND- PLATE MTG AD43H (61957)		EA	6	*	*	*	*		
X20		WASHER, CUP: PLATE NTG FAN GUARD C4525-277-1 (60532)		EA	4						
P 0	5310-584-7800	WASHER, FLAT: GROUND NTG, NO. 10 SCREW SIZE MS15795-708 (96906)		EA	3	*		*	*	3	18
P 0	5310-012-0614	NUT, SELF-LOCKING: HEXAGON, GROUND MTG, NO. 10- THD SIZE MS35650-102 (96906)		EA	1	*	*	*	*	3	19
P 0	5310--061-7326	NUT, SELF-LOCKING: HEXAGON, GROUND NTG, NO. 10-32 THO SIZE MS21045-3 (96906)		EA	1	*	*	*	*	3	20
P 0	5305-984-6194	SCREW, MACHINE: HARNESS MTG, NO. 6-32 THD SIZE, 1 IN. LG MS35206-234 (96906)		EA	4					3	21
P 0	5310-89-2544	NUT, SELF-LOCKING: HEXAGON, HARNESS MTG, NO. 6-2 THD SIZE MS21045-0 (96906)		EA	4	*				3	22
M O		WIRING, HARNESS: J8 CONTROL PANEL B4525-590 (60532) MANUFACTURE FROM: CONNECTOR RECEPTACLE, ELECTRIC, 1 Required, FP3106-28-9P (7782o) WIRE, ELECTRICAL, NO. 16 AWG, AS REQUIRED, FSN 6145-578-7517 WIRE, ELECTRICAL, NO. 14 AWG, AS REQUIRED, FSN 6145-578-7516		EA	1					3	23
				EA	1						

(1) SMR CODE	(2) FEDERAL STOCK NUMBER	(3) DESCRIPTION Reference Number and MFR CODE	(4) UNIT OF MEAS DE	(5) QTY INC IN UNIT	(6)				(7)	
					(a) 1-5	(b) 6-20	(c) 21-50	(d) 51-100	(a) FIG NO	(b) ITEM NO
X20		TERMINAL LUG, 2 REQUIRED, FSN 5D-5_7-1627	EA	2					3	24
PO	5305-943-1942	TERMINAL LOG, 12 REQUIRED, FSN 5940-859-4475	EA	4	*	*	*	*	3	1
X20		SPACER: WIRING HARNESS MTG, 4525-792-1 (60532)	EA	1					3	
X20		GROUP 02 - CONTROL PANEL AND JUNCTION BOX SCREW, CAP, HEXAGON HEAT CONTROL PANEL MTG, IO-32 THD SIZE, 1/2 IN. LG	EA	2					3	2
X20		CONTROL PANEL A4525-595-1 (60532)	EA	1					3	3
X20		KNOB RB175 (86797)	EA	1					3	3
P O	5305-9834-6193	CONTROL PANEL A4525-595-1 (60532)	EA	8	*	*	*	*	3	3
P O	5310-889-2549	SCREW, MACHINE: PLATE AND SWITCH MTG, NO. 8-32 THD SIZE, 1/2 IN. LG MS35206-245 (96906)	EA	8	*	*	*	*	3	4
M O		NUT, SELF-LOCKING: HEXAGON, PLATE AND CONTROL MTG, NO. 8-32 THD SIZE MS2105-08 (96906)	EA	1					3	5
P O	5930-876-1634	LEAD, ELECTRICAL, V14A16 A4525-293-68 (60532)	EA	1					3	6
X20		MANUFACTURE FROM: WIRE, ELECTRICAL, 16 AWG AS REQUIRED, FSN 6145-578-7517	EA	1					3	7
P O	5305-989-743	TERMINAL LUG, 1 REQUIRED, FSN 5940Qe59-4475	EA	1	*	*	*	*	3	8
P O	5310Z45-3296	TERMINAL LUG, 1 REQUIRED, FSN 5940-557-1627	EA	4	*	*	*	*	3	9
X20		CONTROL, TEMPERATURE THERMOSTAT A19AGF9 (92578)	EA	2					3	10
X20		GROMMET, RUBBER: PLATE MS35490-1 (96906)	EA	1					3	11
X20		SCREW, MACHINE: CLAMP MTG, NO. 10-32 THD SIZE 1/2 IN. LG MS35207-263 (96906)	EA	1	*	*	*	*	3	12
X20		WASHER, LOCK: NO. 10 SCREW SIZE MS35338-43 (96906)	EA	1					3	13
X20		CLAMP, LOOP: TEMPERATURE CONTROL, BULB MTG MS21919DG6 (96906)	EA	1					3	14
X20		PANEL ASSEMBLY 84525-596 (60532)	EA	1					3	15
P O	5320-932-1972	PLATE C4525-597 (60532)	EA	6	*	*	*	*	3	12
X20		RIVET, BLIND: INSTRUCTION PLATE AD42H (61957)	EA	1					3	13
X20		PLATE, INSTRUCTION C4525-206-1 (60532)	EA	2					3	14
X20		INSULATION: PANEL ASSEMBLY C4525-588-1 (60532)	EA	1					3	15
X20		PANEL A4525-594-1 (60532)	EA	1					3	15

(1) SMR CODE	(2) FEDERAL STOCK NUMBER	(3) DESCRIPTION Reference Number and MFR CODE USABLE ON CODE		(4) UNIT OF MEAS	(5) QTY INC IN UNIT	(6)				(7)	
						(a) 1-5	(b) 6-20	(c) 21-50	(d) 51-100	(a) FIG NO	(b) ITEM NO
P 0	5930-907-88	SWITCH, ROTARY 8912K6 (15605)		EA	1	*	*	*	*	3	16
P 0	5305-993-1851	SCREW, MACHINE: GROUND NTG, NO. 10-32 THD SIZE 1 IN. LG MS35207-267 (96906)		EA	1	*	*	*	*	3	17
P 0	5305-043-1942	SCREW, CAP, HEXAGON HEAD: BOX NTG NO. 10-32 THD SIZE, 1/2 IN. LG		EA	6	*	*	*	*	4	1
P 0	5305-018-3878	SCREW, CAP, HEXAGON HEAD: BOX MTG, NO. 10-32 THD SIZE, 5/8 IN. LG		EA	2	*	*	*	*	4	2
P 0	5310-98-3708	WASHER, FLAT: BOX MTG, NO. 10 SCREW SIZE		EA	2	*	*	*	*	4	3
X20		JUNCTION BOX ASSEMBLY A4525-500-1 (60532)		EA	1						
X20		BOX, JUNCTION A4525-498 (60532)		EA	1					4	4
X20		INSERT SCREW THREAD MS35914-108 (96906)		EA	4					4	5
P 0	5320 4-4477	RIVET, BLIND: NUT MTG AK42H (61957)		EA	2	*	*	*	*	4	6
X20		NUT, SHEET SPRING 12-1102013 (94222)		EA	1					4	7
X20		PANEL ASSEMBLY: COVER 84525-387-1 (60532)		EA	1					4	
P 0	5320-932-1972	RIVET, BLIND: DIAGRAM MTG AD42H (61957)		EA	6	*	*	*	*	REF	
X20		PLATE, INSTRUCTION: WIRING DIAGRAM A23014 (60532)		EA	1					4	8
X20		PLATE, INSTRUCTION: WIRING DIAGRAM A2301-8959 (60532)		EA	1					4	8
X20		SCREW ASSEMBLY PANEL NTG 12-11-203-12 (94222)		EA	4					4	9
X20		WASHER, RETAINING 12-110141-2 (94222)		EA	4	4				4	10
X20		PANEL B4525-386-1 (60532)		EA	1					4	11
M O		GASKET, RUBBER C4525-1255-17 (60532)		EA	2					4	12
X20		MANUFACTURE FROM: ROLL, RUBBER, 1/8 IN. X 1 IN., AS REQUIRED, FSN 932935-2036		EA	4					4	13
P 0	5305-889-3000	SCREW, MACHINE: HARNESS MTG, SNO.D6-32 THD SIZE. 1/2 IN. LG MS35206-230 (9690D6)		EA	8	*	*	*	*	4	14
P 0	5310-889-2544	NUT, SELF-LOCKING HEXAGON, HARNESS AND TRANSFODRMER MTG, NO. 6-32 THD SIZE MS21045-06 (96906)		EA	12	*	*	*	*	4	15
M O		WIRING, HARNESS J13 C4525-354 (60532)		EA	1					4	16
		MANUFACTURE. FROM CONNECTOR RECEPTACLE, ELECTRIC, 1 REQUIRED, P/N MS3102R24-22PX (96906) TERMINAL LUG, 3 REQUIRED. FSN 5940-557-3446									

(1) SMR CODE	(2) FEDERAL STOCK NUMBER	(3) DESCRIPTION Reference Number and MFR CODE USABLE ON CODE	(4) UNIT OF MEAS	(5) QTY INC IN UNIT	(6)				(7)	
					(a) 1-5	(b) 6-20	(c) 21-50	(d) 51-100	(a) FIG NO	(b) ITEM NO
P O		TERMINAL LUG, 1 REQUIRED, FSN 5940-557-1631	EA	1	*	*	*	*	4	17
M O		WIRE, ELECTRICAL, NO. 8 AWG AS REQUIRED, FSN 6145-184-3878 TRANSFORMER, POWER STEP DOWN 35566 (22694)	EA	1					4	18
P O		WIRING, HARNESS: J14 B4525-500 (60532)								
P O	5310-285-7083	MANUFACTURE FROM: CONNECTOR RECEPTACLE, 1 REQUIRED, P/N MS3102R28-9SW (96906)								
M O		TERMINAL LUG, 7 REQUIRED, FSN 5940-644-8713								
P O		TERMINAL LUG, 4 REQUIRED, FSN 5940-557-1623								
M O		WIRE, ELECTRICAL, NO. 14 AWG, AS REQUIRED, FSN 6145-578-7517	EA	8	*	*	*	*	4	19
		WIRE, ELECTRICAL, NO. 16 AWG, AS REQUIRED, FSN 6145-578-7516								
P O	5310-285-7083	SCREW, MACHINE: HARNESS MTG, NO. 8-32 THD SIZE, 5/8 IN. LG NS3520E-245 (96906)	EA	8	*	*	*	*	4	20
M O		NUT, SELF-LOCKING: HEXAGON, HARNESS MTG, NO. 8-32 THD SIZE MS21044N08 (96906)	EA	1					4	21
M O		WIRING, HARNESS: J4 A4525-502 (60532)								
		MANUFACTURE FROM: CONNECTOR RECEPTACLE, 1 REQUIRED, P/N MS3102R36-14S (969u6)								
		TERMINAL LUG, 9 REQUIRED, FSN 5940-557-1627								
		TERMINAL LUG, 3 REQUIRED, FSN 5940-230-0515								
		TERMINAL LUG, 3 REQUIRED, FSN 5940-644-713								
		WIRE, ELECTRICAL, ND. 16 AWG, AS REQUIRED, FSN 6145-578-7517								
		WIRE, ELECTRICAL, NO. 14 AWG, AS REQUIRED, FSN 6145-578-7516								
M O		WIRING, HARNESS: J10 B4525-50 (60532)	EA	1					4	22
		MANUFACTURE FROM: CONNECTOR RECEPTACLE, 1 REQUIRED, P/N 3102R36-14sx (96906)								
		TERMINAL LUG, 4 REQUIRED, FSN 5940-557-1627								
		TERMINAL LUG, 2 REQUIRED, FSN 59Q641-8,13								
		TERMINAL LUG, 3 REQUIRED, FSN 59204-9142								
		WIRE, ELECTRICAL, NO. 16 AWG, AS REQUIRED, FSN 614-578-7517								
		WIRE, ELECTRICAL, NO. 10 AWG, AS REQUIRED, FSN 6145-578-7513								

(1) SMR CODE	(2) FEDERAL STOCK NUMBER	(3) DESCRIPTION Reference Number and MFR CODE USABLE ON CODE		(4) UNIT OF MEAS	(5) QTY INC IN UNIT	(6)				(7)	
						(a) 1-5	(b) 6-20	(c) 21-50	(d) 51-100	(a) FIG NO	(b) ITEM NO
P 0	5305-984-4988	SCREW, MACHINE: COVER AND CIRCUIT BREAKER MTG, NO. 6-32 THD SIZE, 3/8 IN. LG MS35206-228 (96906)		EA	4	*	*	*	*	5	1
X20		COVER, CIRCUIT BREAKER C4525-203 (60532)		EA	1					5	2
P 0	5925-465-9743	CIRCUIT BREAKER		A	EA	1	*	*	*	*	5
		71-212-4MG6 (74193)									
P 0		CIRCUIT BREAKER	B	EA	1	*	*	*	*	5	3
		71-212-5MG6 (74193)									
X20		PLATE ASSEMBLY		EA	1					5	
		BH525-496-1 (60532)									
PO	5310-889-2549	NUT, SELF-LOCKING: HEXAGON RELAY MTG NO. 8-32 THD SIZE MS21045-08 (96906)		EA	16	*	*	*		5	4
P 0		RELAY, SOLENOID: 25 AMP 9565H2B (15605)		EA	3	*	*	*	2	5	5
PO	5310-984-6193	SCREW, MACHINE: CONTROL ASSEMBLY MTG, NO. 8-32 THD SIZE, 1/2 IN. LG MS35206-245 (96906)		EA	4	*	*	*	*	5	6
P 0	5310-045-3299	WASHER LOCK: NO. 8 SCEW SIZE MS3533842 (96906)		EA	8	*	*	*	*	5	7
P 0	5310-OI14986	WASHER, FLAT2 NO. 8 SCREW SIZE MS27183-7 (96906)		EA	4	*	*	*	*	5	8
X20		CONTROL ASSEMBLY C4525-408-2 (60532)		EA	1					5	
X20		BRACKET C4525-407 (60532)		EA	1					5	9
P 0	5310-197-2298	NUT, SELF-LOCKING: HEXAGON, RELAY MTG. NO. 4-40 THD SIZE MS21044NO4 (96906)		EA	2	*	*	*	*	5	10
P 0	5305-993-0190	SCREW, MACHINE RELAY MTG, NO. 44 THD SIZE, 5/16 IN. LG MS3506-214 (96906)		EA	2	*	*	*	*	5	11
X20		RELAY ASSEMBLY, TIME DELAY B4525-338-2 (60532)		EA	1					5	
P 0	5945-976-3007	RELAY. THERMAL TIME DELAY FR30SN0-24 (06151)		EA	1	*	*	*	2	5	12
M O		LEAD, ELECTRICAL, RELAY A4525-291-48 (60532)		EA	3					5	13
		MANUFACTURE FROM: TERMINAL LUG, 3 REQUIRED, FSN 5940-557-1627 WIRE, ELECTRICAL, NO. 16 AWG 35 IN. REQUIRED, FSN 6145-57s7517									
P 0	5305-984-6197	SCREW, MACHINE: TERMINAL BOARD MTG, NO. 8-32)THD SIZE, 1 IN. LG		EA	4	*	*	*	*	5	14
X20		TERMINAL BOARD 605JJ2502-6 (75382)		EA	1					5	15
P 0	5305-958-5451	SCREW, MACHINE: FUSEHOLDER MTG, NO. 6-32 THD SIZE, 5/8 IN. LG MS35190-239 (96906)		EA	4				*	5	16
P 0	5310-55D-0284	WASHER LOCK: FUSEHOLDER MTG, NO. 6 SCREW SIZE MS35336-9 (96906)		EA	1	*	*	*	*	5	17

(1) SMR CODE	(2) FEDERAL STOCK NUMBER	(3) DESCRIPTION Reference Number and MFR CODE USABLE ON CODE		(4) UNIT OF MEAS	(5) QTY INC IN UNIT	(6)				(7)	
						(a) 1-5	(b) 6-20	(c) 21-50	(d) 51-100	(a) FIG NO	(b) ITEM NO
X20		FUSEHOLDER 2819 (71400)		EA	1					5	18
X20		FUSEHOLDER 4515 (71400)		EA	1					5	19
P 0	5920-280-3175	FUSE F09B25OV16-10A (81349)		EA	2	*	2	2	2	5	20
P 0	5920-939-5442	FUSE KAW5 (71400)		EA	1		*	2	2	5	21
P 0	5305-995-3444	SCREW, MACHINE: TERMINAL BOARD MTG, NO. 10-32 THD SIZE, 7/8 IN. LG		EA	4	*				5	22
P 0	5310-004-3296	MS35207-266 (96906) WASHER, LOCK: PLATE AND TERMINAL BOARD MTG, NO. 10 SCREW SIZE		EA	10	*	*	*	*	5	23
P 0	5310-809-8546	MS35338-43 (96906) WASHER, FLAT: TERMINAL BOARD NO. 10 SCREW SIZE		EA	4	*	*	*	*	5	24
X20		MS27183-8 (96906) TERMINAL BOARD 22010 (75382)		EA	1					5	25
P 0	5945-826-2218	RELAY, SOLENOID: 50 AMP 9565H9 (15605)		EA	1	*	*	*	*	5	26
P 0	5305-989-7434	SCREW, MACHINE: PLATE MTG, NO. 10-32 THD S1ZE, 1/2 IN. LG		EA	6	*	*	*	*	5	27
X20		MS35207-263 (96906) PANEL B4525-459 (60532)		EA	1					5	28
P 0	5310-061-7326	NUT, SELF-LOCKING: HEXAGON, GROUND LEAD MTG, NO. 10-32 THD SIZE		EA	1	*	*	*	*	5	29
M O		MS21045-3 (96906) LEAD, ELECTRICAL: X5CN8N, GROUND JUNCTION BOX A4525-293-82 (60532) MANUFACTURE FROM: TERMINAL LUG, 2 REQUIRED, FSN 5940-557-43K6 WIRE, ELECTRICAL, NO. 8 AWG, 2 REQUIRED, FSN 6145-184-3878		EA	1					5	30
P 0	5305-993-1851	SCREW, MACHINE: GROUND LEAD MTG, NO. 10-32 THD SIZE, 1 IN. LG		EA	1	*	*	*	*	5	31
X20		MS35207-267 (96906) FILTER AND RECTIFIER ASSEMBLY E4525-275 (60532)		EA	1					6	
P 0	5310-761-6882	NUT, PLAIN, HEXAGQMT RECTIFIER MTG, 1/4-20 THD SIZE		EA	1	*	*	*	*	6	1
P 0	5310-010-3319	MS51967-2 (96906) WASHER, LOCK: RECTIFIER MTG, 1/4 IN. SCREW SIZE		EA	1	*	*	*	*	6	2
PO	5310-595-5437	WASHER, FLAT: RECTIFIER MTG, 1/4 IN. SCREW SIZE		EA	1	*	*	*	*	6	3
P 0	5305-984-4988	SCREW, MACHINE CAP MTG, 6-32 THD SIZE, 3/8 IN. LG		EA	4	*	*	*	*	6	4
P 0	5310-082-1404	MS35206-228 (96906) WASHER, LAT CAP MTG, NO. 6 SCREW SIZE MS27183-6 (96906)		EA	4		*	*	*	6	5

(1) SMR CODE	(2) FEDERAL STOCK NUMBER	(3) DESCRIPTION Reference Number and MFR CODE	(4) UNIT OF MEAS	(5) QTY INC IN UNIT	(6)				(7)	
					(a) 1-5	(b) 6-20	(c) 21-50	(d) 51-100	(a) FIG NO	(b) ITEM NO
X20		CAP, TOP END C4525-268-1 (60532)	EA	1					6	6
X20		GASKET 10-006 (12881)	EA	1					6	7
P 0		RECTIFIER, SEMICONDUCTOR DEVICE S55057 (58849)	EA	1	*	*	*	*	6	8
X20		TUBE ASSEMBLY C4525-270 (60532)	EA	1					6	
P 0		RIVET, BLIND AK41H (66957)	EA	8	*	*	*	*	6	9
P 0		NUT, SELF-LOCKING: CAP MTG, NO. 6-3 THD SIZE N521062-06 (96906)	EA	4	*	*	*	*	6	10
X20		TUBE C4525-266-1 (60532)	EA	1					6	11
P 0	5320-882-8388	RIVET, BLIND: CAP MTG AD43H (61957)	EA	4	*	*	*	*	6	12
X20		CAP, BOTTOM END C4525-269 (60532)	EA	1					6	13
X20		GASKET 10-006 (12881)	EA	1					REF	
P 0		NUT, BLIND RIVET: CAP MTG MS27131-19K (96906)	EA	4	*	*	*	*	6	14
P 0	5310-167-1302	NUT, PLAIN, HEXAGON FILTER MTG, 7/16-20 THD SIZE AN316-7R (88044)	EA	4	*	*	*	*	6	15
P 0	5310-809-4085	WASHER, FLAT: FILTER MTG, 7/16 IN. SCREW SIZE MS27183-16 (96906)	EA	4	*	*	*	*	6	16
P 0		FILTER, RADIO FREQUENCY INTERFERENCE 5JX100MODIFIED (56289)	EA	4	*	*	*	*	6	17
M 0		LEAD, ELECTRICAL: FILTERS A4525-291-75 (60532)	EA	8					6	18
P 0	5305-989-7435	MANUFACTURE FROM: TERMINAL LUG, FSN 590-859-4475 TERMINAL LUG, 2 REQUIRED, FSN 5940-534-0970 TERMINAL LUG, 2 REQUIRED, FSN 5940-557-1627 WIRE, ELECTRICAL, NO. 16 AWG, AS REQUIRED, FSN 6145-578-7517	EA	4	*	*	*	*	6	19
P 0	5310-045-3296	SCREW, MACHINE: FILTER TO BOX KTG, NO. 10-32 THD SIZE 5/8 IN. LG MS35207-26 (96906)	EA	4	*	*	*	*	6	20
P 0	5310-809-8546	WASHER, LOCK: FILTER TO BOX MTG, NO. 10 SCREW SIZE MS35338-43 (96906)	EA	4	*	*	*	*	6	21
M 0		WASHER, FLAT: FILTER TO BOX MTG, NO. 10 SCREW SIZE 527183-8 (96906)	EA	4	*	*	*	*	6	21
M 0		WIRING, JUNCTION BOX: INDIVIOUAL LEADS MANUFACTURE FROM: TERMINAL LUG, 13 REQUIRED, FSN 5940-204-9142	EA	30						

(1) SMR CODE	(2) FEDERAL STOCK NUMBER	(3) DESCRIPTION Reference Number and MFR CODE USABLE ON CODE		(4) UNIT OF MEAS	(5) QTY INC IN UNIT	(6)				(7)	
						(a) 1-5	(b) 6-20	(c) 21-50	(d) 51-100	(a) FIG NO	(b) ITEM NO
		TERMINAL LUG, 12 REQUIRED, FSN 5940-230-0515 TERMINAL LUG, 2 REQUIRED, FSN 5940-5340970 TERMINAL LUG, 20 REQUIRED, FSN 5940-557-1627 TERMINAL LUG, 9 REQUIRED, FSN 5940-644-871 3 TERMINAL LUG,3 REQU I RED, FSN 5940-660-3634 WIRE, ELECTRICAL, NO. 10 AWG, AS REQUIRED, FSN 6145-578-7513 WIRE, ELECTRICAL, NO. 14 AWG, AS REQUIRED, FSN 6145-578-7516 WIRE. ELECTRICAL, NO. 16 AWG, FSN 6145-578-7517 GROUP 03 - COMPRESSOR COVER, CRANKCASE HEATER D4341-1505 (60532)		EA	1						7
X20		SPRING SPG58 (60532)		EA	1					7	11
X20		COVER COV351 (60532)		EA	1					7	12,
X20		INSULATION 1NS128 (60532)		EA	1					7	13
P 0	4130-469-6759	CRANKCASE, HEATER C4525-734-4 (60532))		EA	1	*	*	*	*	7	14
P 0	5305-206-0512	SCREW, MACHINE: RECEPTACLE MTG, ND. 6-32 THD SIZE 1/2 IN. LG ANS15-6-8 (88044)		EA	4	*	*	*	*	8	1
P 0	5310-0454007	WASHER, LOCK: COVER AND RECEPTACLE MTG, NO. 6 SCREW SIZE MS35338-41 (96906)		EA	8	*	*	*	*	8	2
P 0	5305-591-3320	SCREW, MACHINE: LEAD TERMINAL MTG, NO. 10-32 THD SIZE. 5/16 IN. LG AN520-10-5 (881W)		EA	3	*	*	*	*	8	3
P 0	531C-551-6308	WASHER, LOCK: COVER AND TERMINAL BOARD MTG, ND. 10 SCREW SIZE MS353-3 (969D6)		EA	5	*	*	*	*	8	4
M O		RECEPTACLE ASSDEBLY, ELECTRIC: J11 B4525-727 (60532) MANUFACTURE FROM: CONNECTOR RECEPTACLE, ELECTRIC 1 REQUIRED, FSN 59t-847-0568 INSULATION, AS REQUIRED, P/N D4525-731-1 (60532) INSULATION, AS REQUIRED, P/N D4525-732-2 (60532) TERMINAL LUG, 3 REQUIRED, FSN 5940-204-9142 TERMIML LUG, 2 REQUIRED, FSN 5940-557-1629 TEMINAL LUG, 4 REQUIRED, FSN 5940-859-4475		EA	1					8	5

(1) SMR CODE	(2) FEDERAL STOCK NUMBER	(3) DESCRIPTION	(4) UNIT OF MEAS	(5) QTY INC IN UNIT	(6)				(7)	
					(a) 1-5	(b) 6-20	(c) 21-50	(d) 51-100	(a) FIG NO	(b) ITEM NO
P 0	5305-206-0513	WIRE, ELECTRICAL, ND. 16 AWG, AS REQUIRED, FSN 6145-578-7517 WIRE, ELECTRICAL, NO. 10 AWG, AS REQUIRED, FSN 6145-578-7513 WIRE, ELECTRICAL, NO. 8 AWG, AS REQUIRED, FSN 6145-578-7518 SCREW, MACHINE: COVER MTG, NO. 6-32 THD SIZE. 5/16 IN. LG AN515-6-5 (88044)	EA	4	*	*	*	*	8	6
X20		COVER 54525-196-3 (60532)	EA	1					8	7
P 0		SCREW, MACHINE: THERMAL BOARD MTG, NO. 10-32 THD SIZE 5/8 IN. LG AN520-10-10 (8804)	EA	2	*	*	*	*	8	8
X20		TERMINAL BOARD 812-2 (75382)	EA	1					8	9
X20		GROMET, RUBBER MS390-34 (96906)	EA	1					8	10
		GROUP 05 -REFRIGERATION COMPONENTS AND CONDENSATE DRAIN								
X20		CLAMP, HOSE MS35982-11 (96906)	EA	2					10	38
X20		HOSE, DRAIN MSE45 (60532)	EA	1					10	39
X20		TUBE ASSEMBLY, DRAIN: EVAPORATOR CONDENSATE C4525-281 (60532)	EA	1					10	
X20		TUBE, DRAIN EA525-280 (60532)	EA	1	1				10	40
P 0	5315-234-1856	PIN, COTTER MS24665-155 (96906)	EA	1	*	*	*	*	10	41
X20		BALL BEARING BAL25 (60532)	EA	1					10	42
X20		SPRING, HELICAL COMPRESSION SPG55 (93232)	EA	1					10	43
P 0	5305-989-7435	SCREW, MACHINE: NO. 10-32 THD SIZE, 5/8 IN. LG MS35207-26 (96906)	EA	22	*	*	*	*	11	3
X20		NUT 083-141 (93781)	EA	2					11	12
X20		HOUSING OB3-27 (93781)	EA	2					11	13
X20		SLEEVE AMP25 (93781)	EA	4					11	14
X20		COIL, 24V, DC 757230 (93781)	EA	2					11	15
P 0	5310-197-2298	NUT, SELF-LOCKING:-HEXAGON, CONNECTOR MTG, NO. 4-40 THD SIZE MS21044N04 (96906)	EA	8	*	*	*	*	11	16
P 0	5305-984-4979	SCREW, MACHINE: CONNECTOR MTG, NO. 4-40 THD SIZE, 1 1/4 IN. LG MS35206-22 (96906)	EA	8	*	*	*	*	11	17
X20		CONNECTOR RECEPTACLE, ELECTRIC MS3102R12S3P (96906)	EA	2					11	18

(1) SMR CODE	(2) FEDERAL STOCK NUMBER	(3) DESCRIPTION Reference Number and FSCM USABLE ON CODE		(4) UNIT OF MEAS	(5) QTY INC IN UNIT	(6)				(7)	
						(a) 1-5	(b) 6-20	(c) 21-50	(d) 51-100	(a) FIG NO	(b) ITEM NO
X20		ADAPTER CONNECTOR C4525-116 (60532)		EA	2					11	19
X20		CLAMP, LOOP: SUPPORT, EVAPORATOR PAN DRAIN PIPE MS2191DG10 (96906)		EA	1						
X20		PLATE, INSTRUCTIONI SIGHT GLASS PLT199 (60532)		EA	1						
		GROUP 06 - HEATER ASSEMBLY									
P 0	5305-989-7434	SCREW, MACHINE: SUPPORT MTG, NO. 10-32 THD SIZE, 1/2 IN. LG MS35207-263 (96906)		EA	4	*	*	*	*	12	1
X20		HEATING ASSEMBLY A4525-540-1 (60532)		EA	1					12	
X20		CLAMP ASSEMBLY C4525-580-1 (60532)		EA	6					12	2
X20		SCREW, ASSEMBLY 12-11-607-12 (94222)		EA	2					12	3
X20		WASHER, RETAINING 12-11-014-12 (94222)		EA	2					12	4
X20		CLAMP D45254-1 (60532)		EA	1					12	5
P 0		HEATING ELEMENT 4385-005-01 (71400)		EA	6	*	*	*	*	12	6
P 0	5310.889-2549	NUT, SELF-LOCKING: HEXAGON, SWITCH MTG, No. 8-32 THD SIZE MS21045-08 (96906)		EA	2	*	*	*	*	12	7
P 0	5310-011-4986	WASHER, FLAT: SWITCH MTG, NO. 8 SCREW SIZE MS27183-7 (96906)		EA	1	*	*	*	*	12	8
P 0	5305-984-6194	SCREW, MACHINE: SWITCH MTG, NO. 8-32 THD SIZE, 5/8 IN. LG MS35206-246 (96906)		EA	2	*	*	*	*	12	9
X20		SUPPORT, HEATER B4525-529 (60532)		EA	1					12	10
P 0		SWITCH, THERMOSTATIC HEATER TYPE CWA1249 (82647)		EA	1	*	*	*	*	12	11
M O		WIRING, HEATING ASSEMBLY AND THERMOSTATIC SWITCH: INDIVIDUAL LEADS MANUFACTURE FROM: TERMINAL LUG, 5 REQUIRED, FSN 5940-2-9142 TERMINAL LUG, 6 REQUIRED, FSN 5940-6448-713 WIRE, ELECTRICAL, NO. 12 AWG, AS REQUIRED, FSN 6145-578-7521 WIRE, ELECTRICAL. NO. 14 AWG, AS REQUIRED, FSN 6145-578-7516		EA	6						
		GROUP 00 - FANS AND MOTORS									
P 0	5306-225-8498	SCREW, CAP, HEXAGON HEAD: MOTOR MTG, 5/16-18 THD SIZE, 7/8 IN. LG MS90725-33 (96906)		EA	4	*	*	*	*	13	1

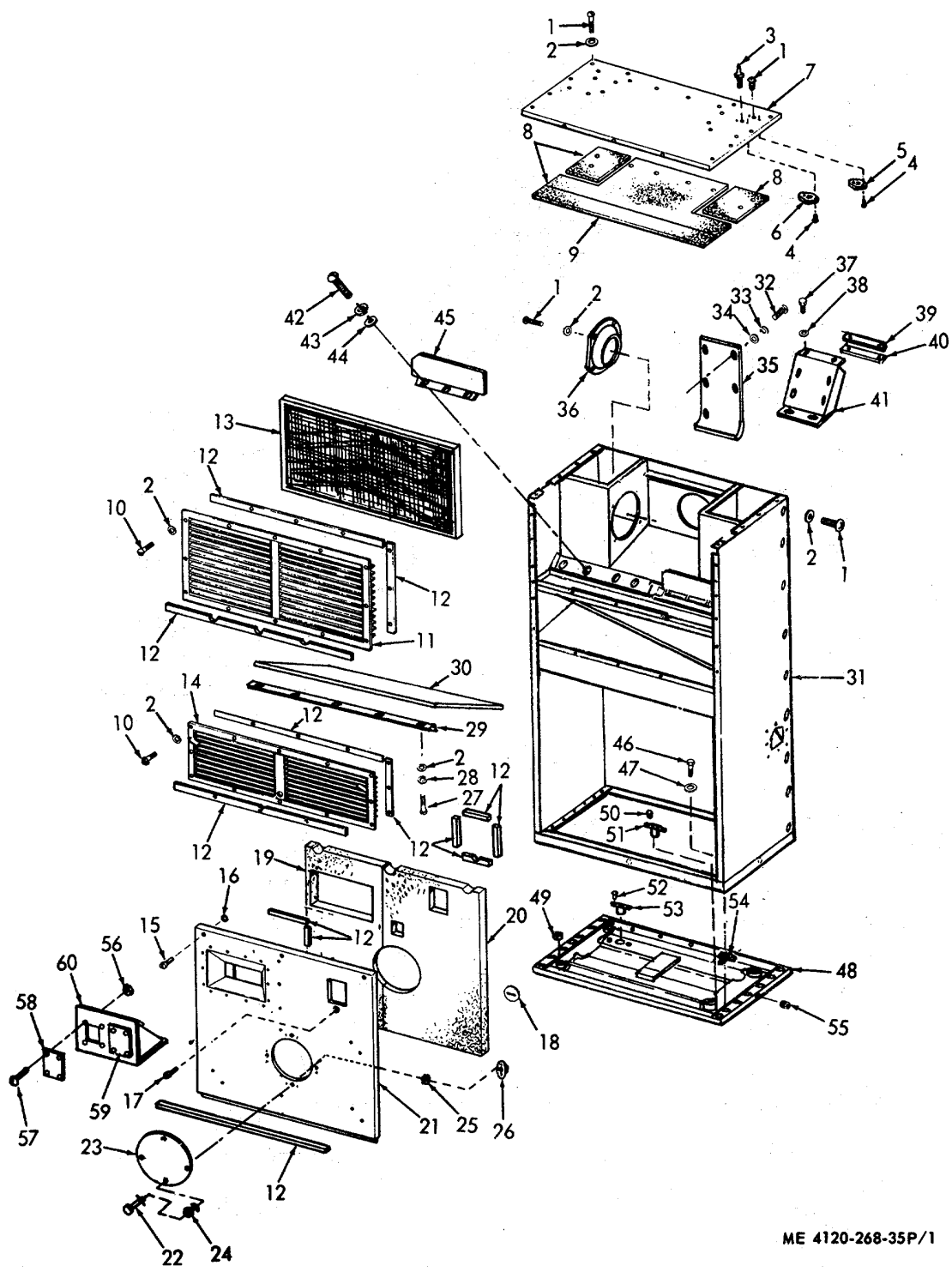
(1) SMR CODE	(2) FEDERAL STOCK NUMBER	(3) DESCRIPTION Reference Number and FSCM USABLE ON CODE	(4) UNIT OF MEAS	(5) QTY INC IN UNIT	(6)				(7)	
					(a) 1-5	(b) 6-20	(c) 21-50	(d) 51-100	(a) FIG NO	(b) ITEM NO
P 0	5310C-07-9566	WASHER, LOCK. MOTOR NTG, 5/16 IN. SCREW SIZE MS35338-5 (96906)	EA	4	*	*	*	*	13	2
P 0	5310-081-4219	WASHER, FLAT: MOTOR MTG, 5/16 IN. SCREW SIZE MS27183-12 (96906)	EA	4	*	*	*	*	13	3
X20		SHIM, ADJUSTING CONDENSER FAN MOTOR, .063 IN. THK C4525-761-3 (60532)	EA	4					13	4
X20		SHIM, ADJUSTING CONDENSER FAN MOTOR, .032 IN. THK C4525-7614 (60532)	EA	4					13	5
P20		FAN ASSEMBLY, CONDENSER FAN297 (60532)	EA	1	*	*	*		13	6
X20		SCREW, SET SCR325 (60532)	EA	2					13	7
X20		KEY, MACHINE MS20066-147 (96906)	EA	1					13	8
P 0	6105-401-4616	MOTOR CONDENSER, FAN: 60 CYCLE 7015-4 (64731) (COMPONENTS SAME AS MOTOR, CONDENSER FAN, P/N 7025-6 (64731) EXCEPT AS SYMBOLIZED) (ELECTRIC MOTORS AND REPAIR PARTS ARE TO BE REQUISITIONED BY COMPLETE IDENTIFYING NOMENCLATURE, COMPLETE MOTOR AND NAMEPLATE DATA MUST BE SHOWN ON REQUISITION TO INSURE PROPER SUPPLY OF PARTS OR MOTOR)	A	EA	1	*	*	*	2	13
P 0		MOTOR, CONDENSER, FAN: TOO CYCLE 7025-6 (64731) (ELECTRIC MOTORS AND REPAIR PARTS ARE TO BE REQUISITIONED BY COMPLETE IDENTIFYING NOMENCLATURE, COMPLETE MOTOR AND NAMEPLATE DATA MUST BE SHOWN ON REQUISITION TO INSURE PROPER SUPPLY OF PARTS OR MOTOR)	EA	1	*	*	*		2	13
P 0	5305-012-0612	SCREW, MACHINE: BELL MTG, NO. 10-32 THD SIZE, 5/8 IN. LG MS35242-73 (96906)	EA	8	*	*	*	*	13	9
X20		END BELL, FRONT 02-009922-000 (64731)	EA	1					13	10
X20		END BELL, REAR 02-009923-000 (64731)	EA	1					13	11
X20		BEARING, BALL FRONT 01-005248-085 (64731)	EA	1					13	12
X20		ROTOR AND SHAFT 02-010794-002 (64731)	EA	1					13	13
X20		ROTOR AND SHAFT 02-010795-02 (64731)	EA	1					13	13
X20		BEARING, BALL REAR 01-005248-086 (64731)	EA	1					13	14
X20		FRAME AND STATOR 02-10794-001 (p731)	EA	1					13	15
X20		FRAME AND STATOR 02-010795-001 (64731)	EA	1					13	15
P 0	5305-206-8156	SCREW, MACHINE: BOX MTG, NO. 8-32 THD SIZE, 2 IN. LG	EA	4	*	*	*	*	13	16
X20		BOX, CONNECTOR 9242P (64731)	EA	1					13	17

SMR CODE	FEDERAL STOCK NUMBER	DESCRIPTION REF NUMBER & MFR CODE	(1) USABLE ON CODE	(2) UNIT OF MEAS	QTY INC IN UNIT	(3) (4) (5) 15-DAY ORGANIZATIONAL MAINTENANCE ALW				(6) (7) ILLUS-TRATION	
						(a)	(b)	(c)	(d)	(a)	(b)
						1-5	6-20	21-50	51-100	FIG. NO.	ITEM NO.
P 0	5305-013-2636	SCREW, MACHINE: CONNECTOR MTG, NO. 4-40 THD SIZE, 3/8 IN. LG		EA	4	*	*	*	*	13	18
X20		CONNECTOR, PLUG, ELECTRIC MS3102R16-10P (96906)		EA	1					13	19
P 0	5305-889-2999	SCREW, MACHINE: PROTECTOR MTG, NO. 4-40 THD SIZE, 1/2 IN. LG		EA	2	*	*	*	*	13	20
X20		MS35206-217 (96906) PROTECTOR, THERMAL OVERLOAD MWH33AO (82646)	A	EA	1					13	21
X20		PROTECTOR, THERMAL OVERLOAD MwH2OAO (82646)	B	EA	1					13	21
P 0	5306-225-8496	SCREW, CAP, HEXAGON: MOTOR MTG, 5/16-18 THD SIZE, 5/8 IN. LG		EA	4	*	*	*	*	1	1
P 0		MS90725-31 (96906) WASHER, FLAT: MOTOR HTG, 5/16 IN. SCREW SIZE		EA	4	*	*	*	*	14	2
P 0	5310-040-9566	MS27183-12 (96906) WASHER, LOCK: MOTOR MTG, 5/16 IN. SCREW SIZE		EA	4	*	*	*	*	14	3
X20		MS35338-45 (96906) FAN AND MOTOR ASSEMBLY, EVAPORATOR: 60 CYCLE	A	EA	1					14	
		B4525-368-1 (60532) (COMPONENTS SAME AS FAN AND MOTOR ASSEMBLY, P/N B4525-368-2, EXCEPT AS SYMBOLIZED)									
X20		FAN AND MOTOR ASSEMBLY, EVAPORATOR: 400 CYCLE	B	EA	1					14	
		B4525-368-2 (60532)									
P 0	5305-206-3466	SETSCREW: FANS, SOCKET HEAD, 1/4-20 THD SIZE, 3/4 IN. LG		EA	4	*	*	*	*	14	4
		4524-2058 (60532)									
P20	4130-981-6616	FAN, RIGHT HAND, EVAPORATOR FAN183 (60532)		EA	1	*	*	*	*	14	5
P20		FAN, LEFT HAND, EVAPORATOR FAN296 (60532)		EA	1	*	*	*	*	14	6
X20		KEY, MACHINE MS20066-146 (96906)		EA	2					14	7
P 0	6105-253-5519	MOTOR, EVAPORATOR FAN: 60 CYCLE 926303 (6X731)	A	EA	1	*	*	*	2	14	
		(ELECTRIC MOTORS AND REPAIR PARTS ARE TO BE REQUISITIONED BY COMPLETE IDENTIFYING NOMENCLATURE, COMPLETE MOTOR AND NAMEPLATE DATA MUST BE SHOWN ON REQUISITION TO INSURE PROPER SUPPLY OF PARTS OR MOTOR)									
P 0	6105-253-5520	MOTOR, EVAPORATOR FAN: 400 CYCLE (7 15-22 (64731)	B	EA	1	*	*	*	2	14	
		(ELECTRIC MOTORS AND REPAIR PARTS ARE TO BE REQUISITIONED BY COMPLETE IDENTIFYING NOMENCLATURE, COMPLETE MOTOR AND NAMEPLATE DATA MUST BE SHOWN ON REQUISITION TO INSURE PROPER SUPPLY OF PARTS OR MOTOR)									
P 0		SCREW, MACHINE: BELL MTG NO. 10-32 THD SIZE, 3/4 IN. LG		EA	8	*	*	*	*	14	8
X20		MS35224-65 (96906) END, BELL 02-09312-000 (64731)		EA	2					14	9

(1) SMR CODE	(2) FEDERAL STOCK NUMBER	(3) DESCRIPTION USABLE ON CODE	(4) UNIT OF MEAS	(5) QTY INC IN UNIT	(6) 15-DAY ORGANIZATIONAL MAINTENANCE ALW				(7) ILLUS- TRATION	
					(a)	(b)	(c)	(d)	(a)	(b)
					1-5	6-20	21-50	51-100	FIG. NO	ITEM NO
		REF NUMBER & MFR CODE								
X20		BEARING. BALL 01-05248-084 (64731)	EA	2					14	10
X20		ROTOR AND SHAFT 02-010391-009 (64731)	A EA	1					14	11
X20		ROTOR AND SHAFT 02-010809-002 (64731)	B EA	1					14	11
X20		FRAME AND STATOR 02-009486-001 (64731)	A EA	1					14	12
X20		FRAME AND STATOR 02-010809-001 (64731)	B EA	1					14	12
P O	5305-206-8156	SCREW, MACHINET BOX MTG, NO. 8_32 THD SIZE, 2 IN. LG	EA	4	*	*	*	*	14	13
X20		BOX, CONNECTOR 9315P (64731)	EA		1				14	14
P O	5305-013-2636	SCREW, MACHINE: CONNECTOR MTG, NO. 4-40 THD SIZE, 3/8 IN. LG	EA	4	*	*		*	14	15
X20		CONNECTOR PLUG, ELECTRIC MS3102Ri4s7P (96906)	EA	1					14	16
P O		SCREW, MACHINE: PROTECTOR MTG, NO. 4-40 THD SIZE, 1/2 IN. LG MS35206-217 (96906)	EA	2	*	*	*	*	14	17
X20		PROTECTOR, THERMAL OVERLOAD MWH39AO (82646)	A EA	1					14	18
X20		PROTECTOR, THERMAL OVERLOAD MWJ33AO (82646)	B EA	1					14	18
M O		GROUP 08 WIRING HARNESSSES WIRING HARNESS: P14 AND J12, FROM JUNCTION BOX TO P12 B4525-613 (60532) MANUFACTURE FROM: CONNECTOR PLUG, ELECTRIC: P14 HARNESS, 1 REQUIRED, P/N Ms3106R28-9Pw (96906) CONNECTOR RECEPTACLE, ELECTRIC: J12 HARNESS, AS REQUIRED, P/N MS3100R28-95Z (96906) WIRE, ELECTRICAL, 16 AWG AS REQUIRED, FSN 6145-578-7517 WIRE, ELECTRICAL, 14 AWG AS REQUIRED, FSN 6145-578-7516	EA	1						
M O		WIRING HARNESS: P5, P10, P11 AND P16, FROM JUNCTION BOX TO COMPRESSOR, PRESSURE SWITCH AND SOLENOID VALVE B4525-612 (60532) MANUFACTURE FROM: CONNECTOR PLUG, ELECTRIC: P5 HARNESS, 1 REQUIRED, FSN 5935-725-4638 CONNECTOR PLUG, ELECTRIC: P16 HARNESS, 1 REQUIRED, P/N MS3106R12535Y (96906) CONNECTOR PLUG, ELECTRIC: P11 HARNESS, 1 REQUIRED, FSN 5935-878-7588	EA	1						

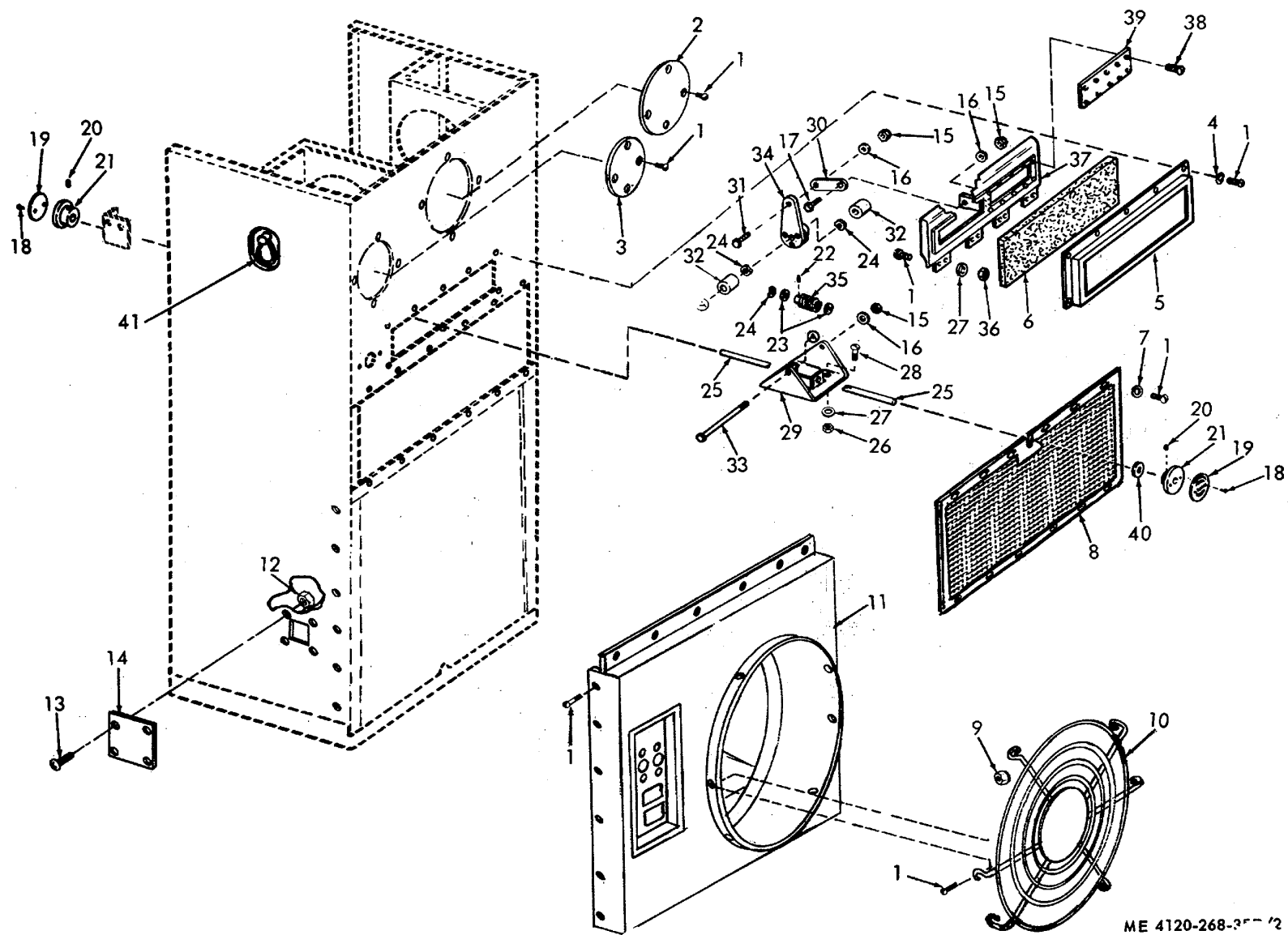
(1) SMR CODE	(2) FEDERAL STOCK NUMBER	(3) DESCRIPTION USABLE ON CODE	(4) UNIT OF MEAS	(5) QTY INC IN UNIT	(6) 15-DAY ORGANIZATIONAL MAINTENANCE ALW				(7) ILLUS- TRATION	
					(a) 1-5	(b) 6-20	(c) 21-50	(d) 51-100	(a) FIG. NO	(b) ITEM NO
M O		<p>CONNECTOR PLUG, ELECTRIC: PIO HARNESS, 1 REQUIRED, P/N MS31OR36-14PX (96906) WIRE, ELECTRICAL, NO. 16 AWG, AS REQUIRED, FSN 6145-578-7517 WIRE, ELECTRICAL, NO. 10 AWG, AS REQUIRED, FSN 6145-578-7513 WIRING HARNESS: P6, P12 AND J7, FROM J12 TO SOLENOID VALVE AND P7 B4525-614 (60532) MANUFACTURE FROM CONNECTOR PLUG, ELECTRIC P6 KARNESS, I REQUIRED, FSN 5935-725-4638 CONNECTOR PLUG, ELECTRIC: P12 HARNESS, 1 REQUIRED, P/N Ms3lo28-9Pz (96906) CONNECTOR RECEPTACLE, ELECTRIC: J7 HARNESS, I REQUIRED, P/N NS31R28-95X (96906) WIRE, ELECTRICAL, NO. 16 AWG, AS REQUIRED, FSN 6145-578-7517 WIRE, ELECTRICAL, NO. 14 AWG, AS REQUIRED, FSN 6145-578-75i6 WIRING HARNESS J1 AND P13, POWER INPUT 84525-615 (60532) MANUFACTURE FROM\$ CONNECTOR PLUG, ELECTRIC P13, 1 REQUIRED, P/N NS3106R24-225X (96906) CONNECTOR RECEPTACLE, ELECTRIC: J1, 1 REQUIRED P/N MS310OR24-22P (96906) WIRE, ELECTRICAL, NO. 8 AWG, AS REQUJRED, FSN 6145-578-7515 WIRING HARNESS P2, P4 AND P8, FROM CONTROL PANEL TO JUNCTION BOX AND CONDENSER FAN MOTOR B4525-616 (60532) MANUFACTURE FROM CONNECTOR PLUG, ELECTRIC: P8 HARNESS, 1 REQUIRED, FSN 5935-886-3956 CONNECTOR PLUG, ELECTRIC: P2 HARNESS, 1 REQUIRED, FSN 5935-755-3493 CONNECTOR PLUG, ELECTRIC P4 HARNESS, I REQUJRED, P/N Ms3106R36-14P (96906) WIRE, ELECTRICAL, NO. 16 MWG, AS RE9UJURED, FSN 6145-578-75i7 WIRE, ELECTRICAL, NO. 14 AWG, AS REQUIRED, FSN 6145-578-7516 WIRING HARNESS: P3 AND P7, FROM J7 TO HEATER AND EVAPORATOR FAN MOTOR 84525-539 (60532) MANUFACTURE FROM: CONNECTOR PLUG, ELECTRIC P3, 1 REQUIRED, FSN 5935-805-4991</p>	EA	1						
M O			EA	1						
M O			EA	1						
M O			EA	1						

(1) SMR CODE	(2) FEDERAL STOCK NUMBER	(3) DESCRIPTION USABLE ON CODE	(4) UNIT OF MEAS	(5) QTY INC IN UNIT	(6) 15-DAY ORGANIZATIONAL MAINTENANCE ALW				(7) ILLUS- TRATION	
					(a)	(b)	(c)	(d)	(a)	(b)
					1-5	6-20	21-50	51-100	FIG. NO.	ITEM NO.
		CONNECTOR PLUG, ELECTRIC: IP, 1 REQUIRED, PNS M3106R28-9Px (96906) TERMINAL LUG, 6 REQUIRED, FSN 5940444-8713 WIRE, ELECTRICAL, NO. 14 *A, AS REQUIRED, FSN 611578-75i6 WIRE, ELECTRICAL, NO. 16 *AW, AS REQUIRED, FSN 6145-578-7517								
0	5935-816-864	CONNECTOR PLUG, ELECTRICAL P1, ROMWR INPUT MS3106R24-22s (96906)	EA	1						
X20		CAP, DUST: INPUT POWER CONNECTOR, PI Ms53-246 (96906)	EA	1						
M O		INSULATION SLEEVING, ELECTRIC FIT221-3-16 (92164) MANUFACTURE FROM INSULATION SLEEVING, 3/16 IN. ID, -AS REQUIRED, FSN 5970o82-3942	EA	1						
M O		INSULATION SLEEVING ELECTRIC FIT221-1-8 (92L) MANUFACTURE FROM: INSULATION SLEEVING, 1/8 IN. ID, AS REQUIRED, FSN 570-990-9912	EA	3						
X20		CLAMP, LOOP: WIRING HARNESS MTG, HEATER MS2195900 (96906)	EA	1						



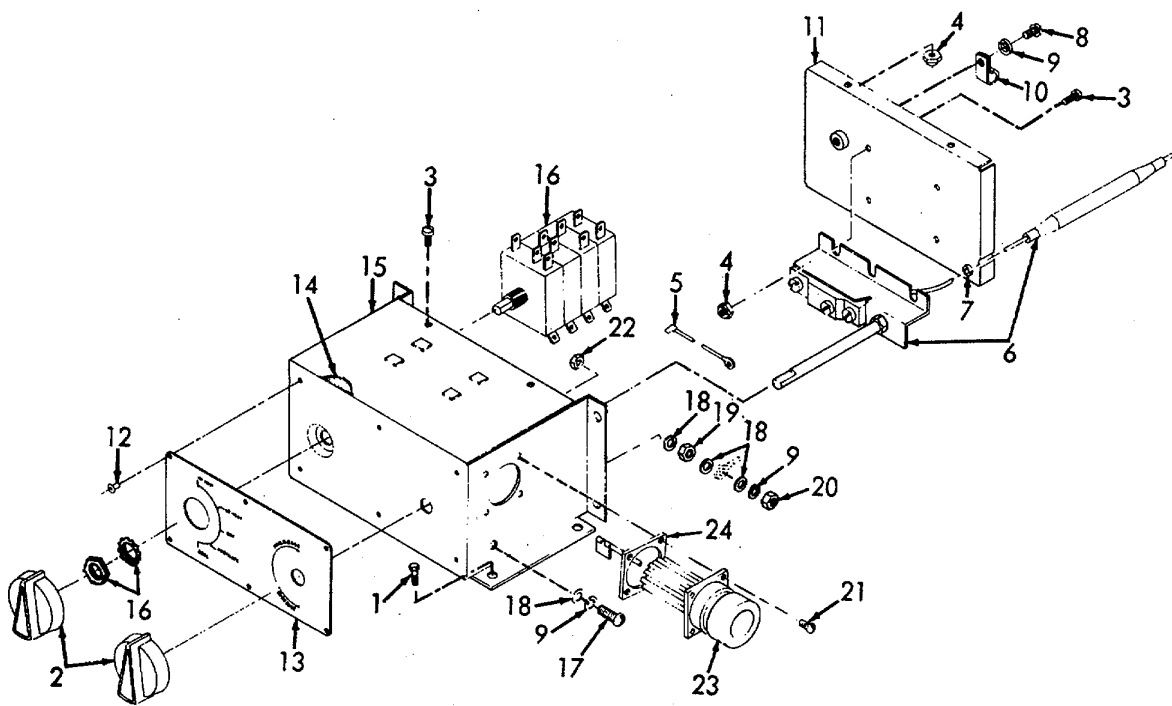
ME 4120-268-35P/1

Figure 1. Casing, Panels, Grilles and Mist Eliminator 21



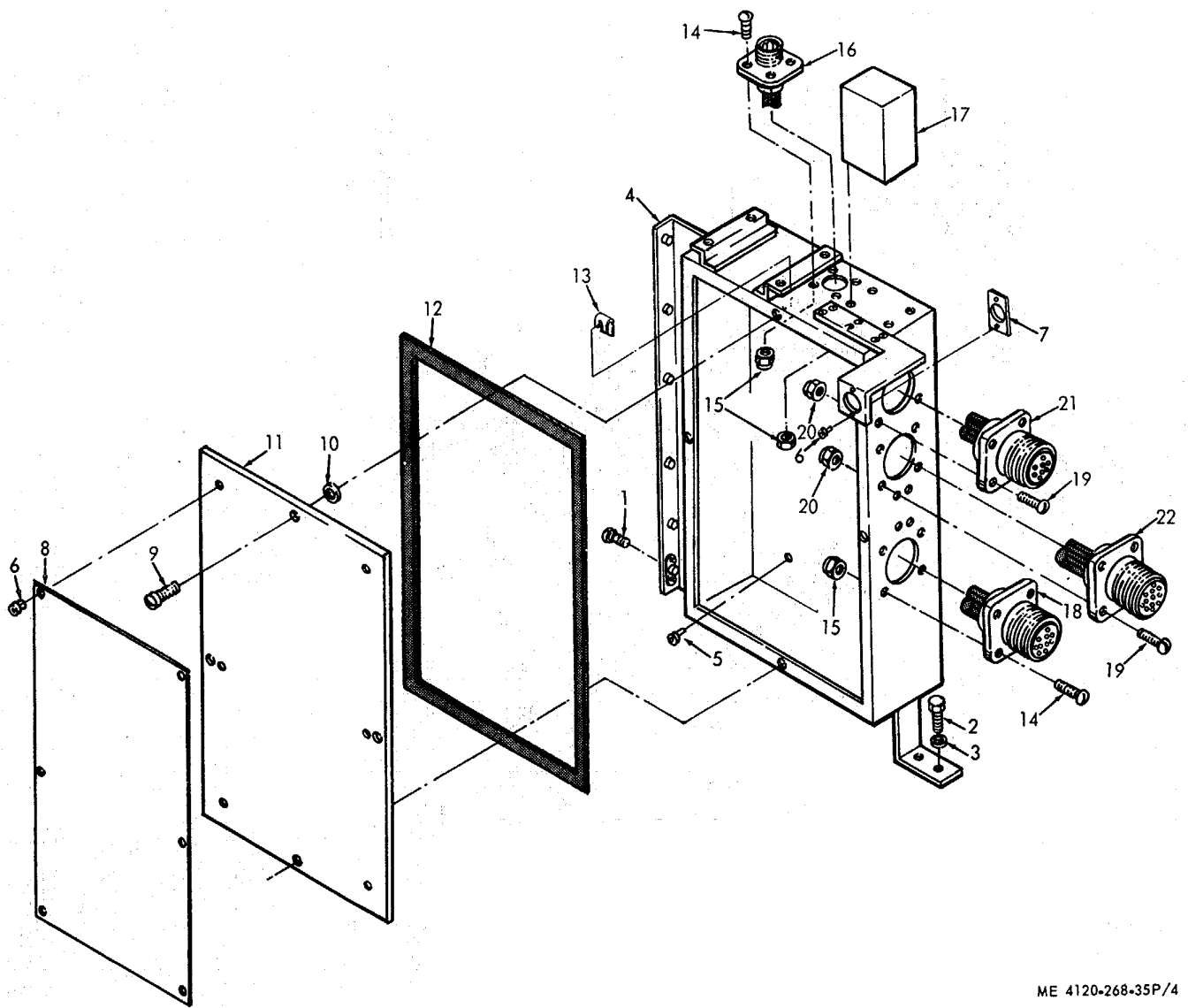
ME 4120-268-35 1/2

Figure 2. Damper Control, Grille, Panel and Guard



ME 4120-268-35P/3

Figure 3. Control Panel



ME 4120-268-35P/4

Figure 4. Junction Box, Transformer and Wiring Harnesses

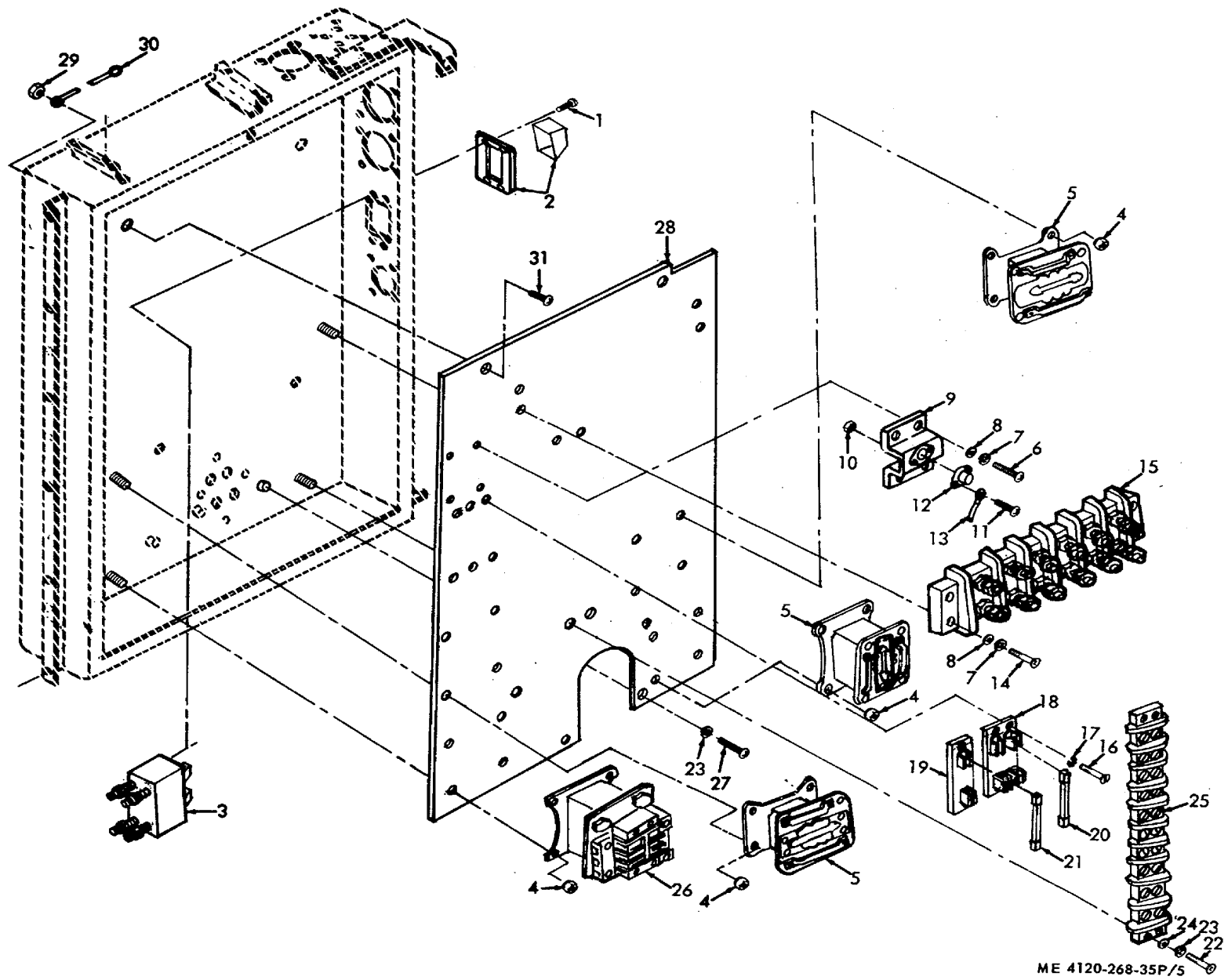
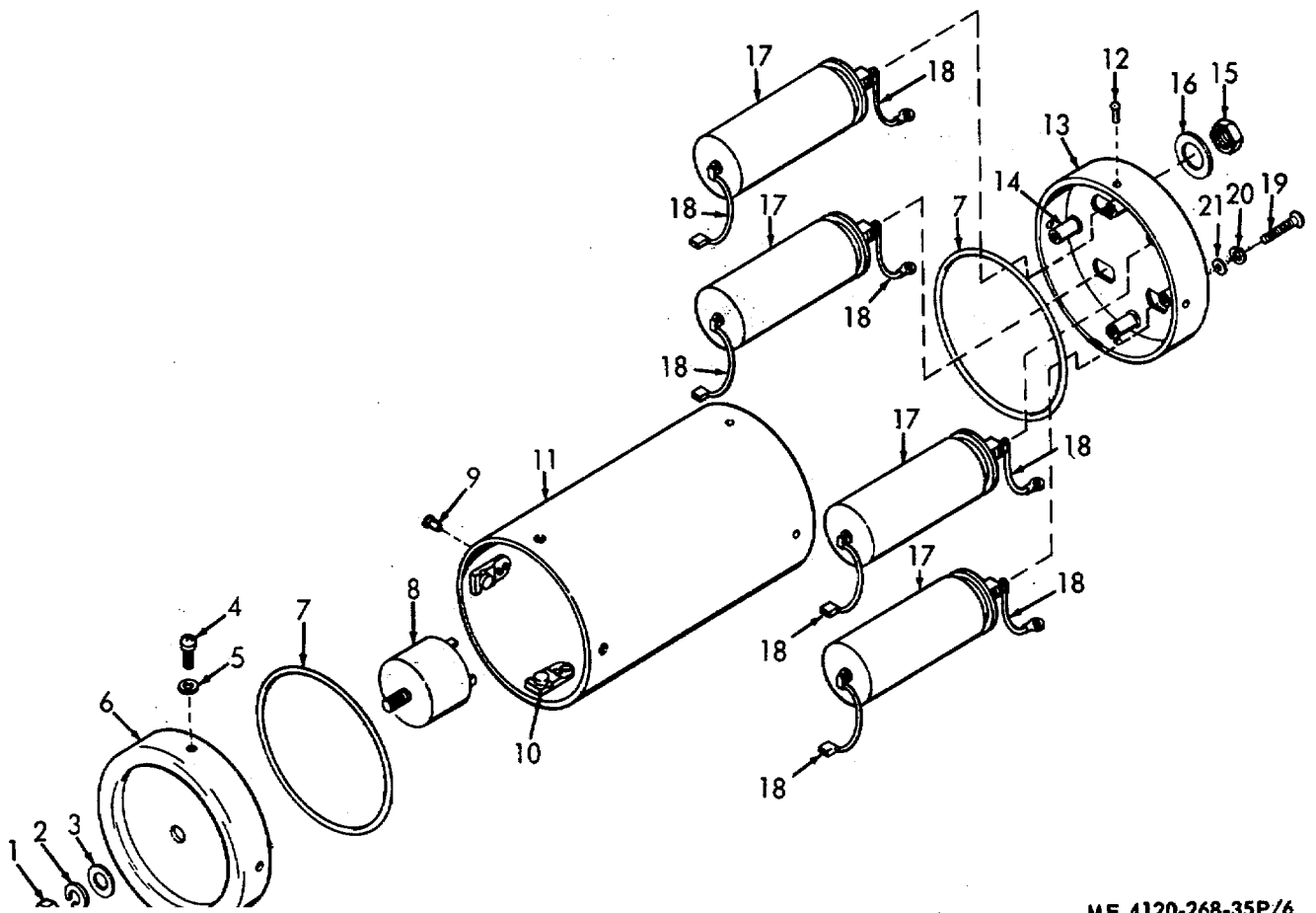
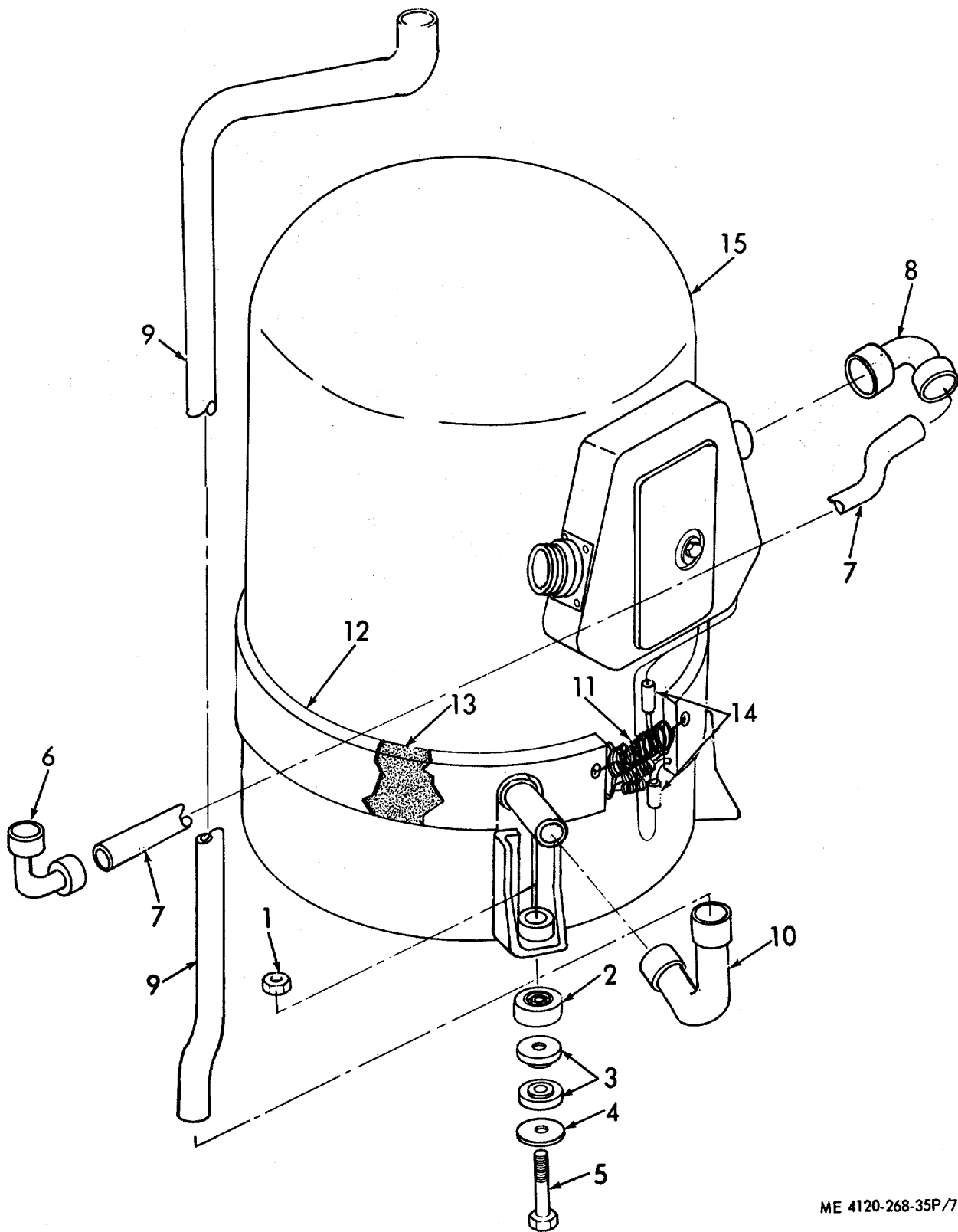


Figure 5. Panel



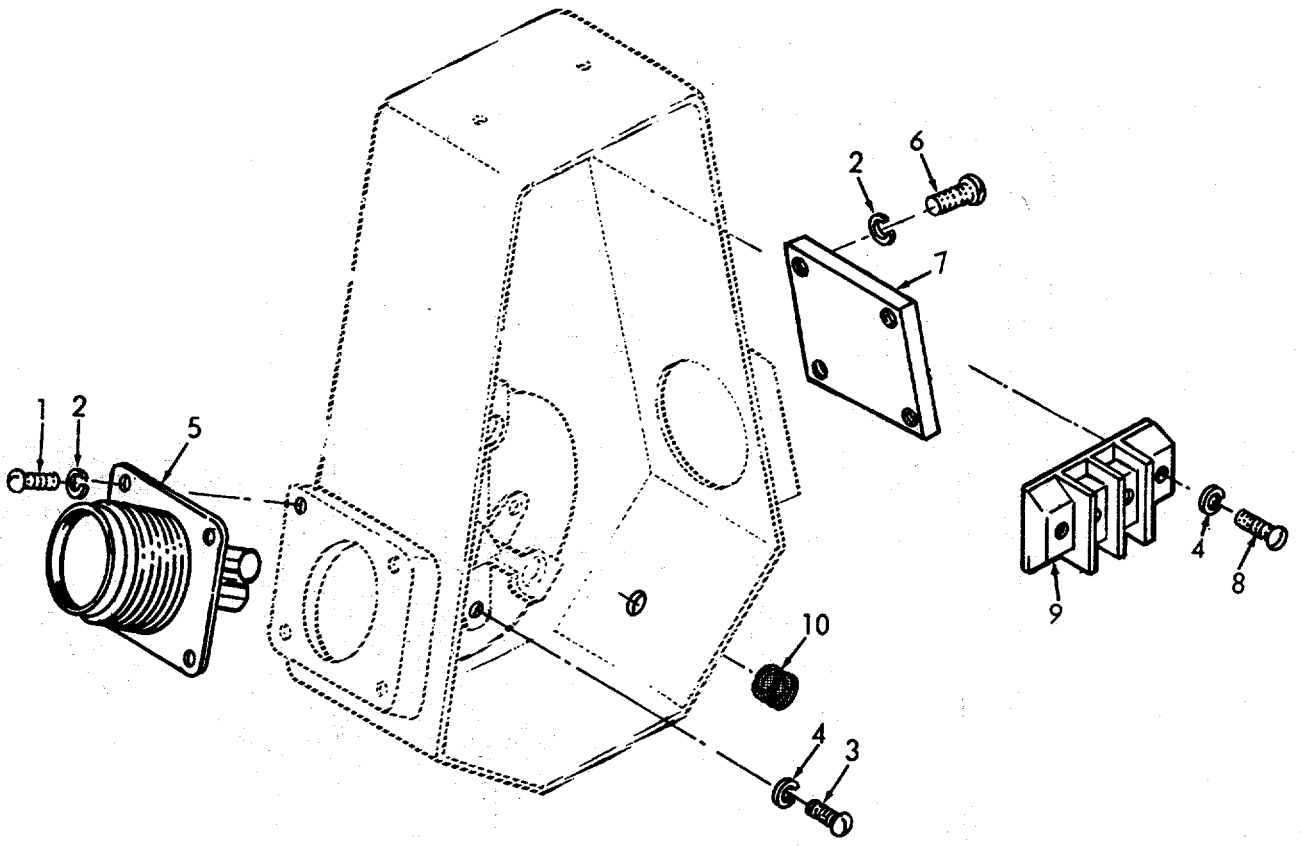
ME 4120-268-35P/6

Figure 6. Filter



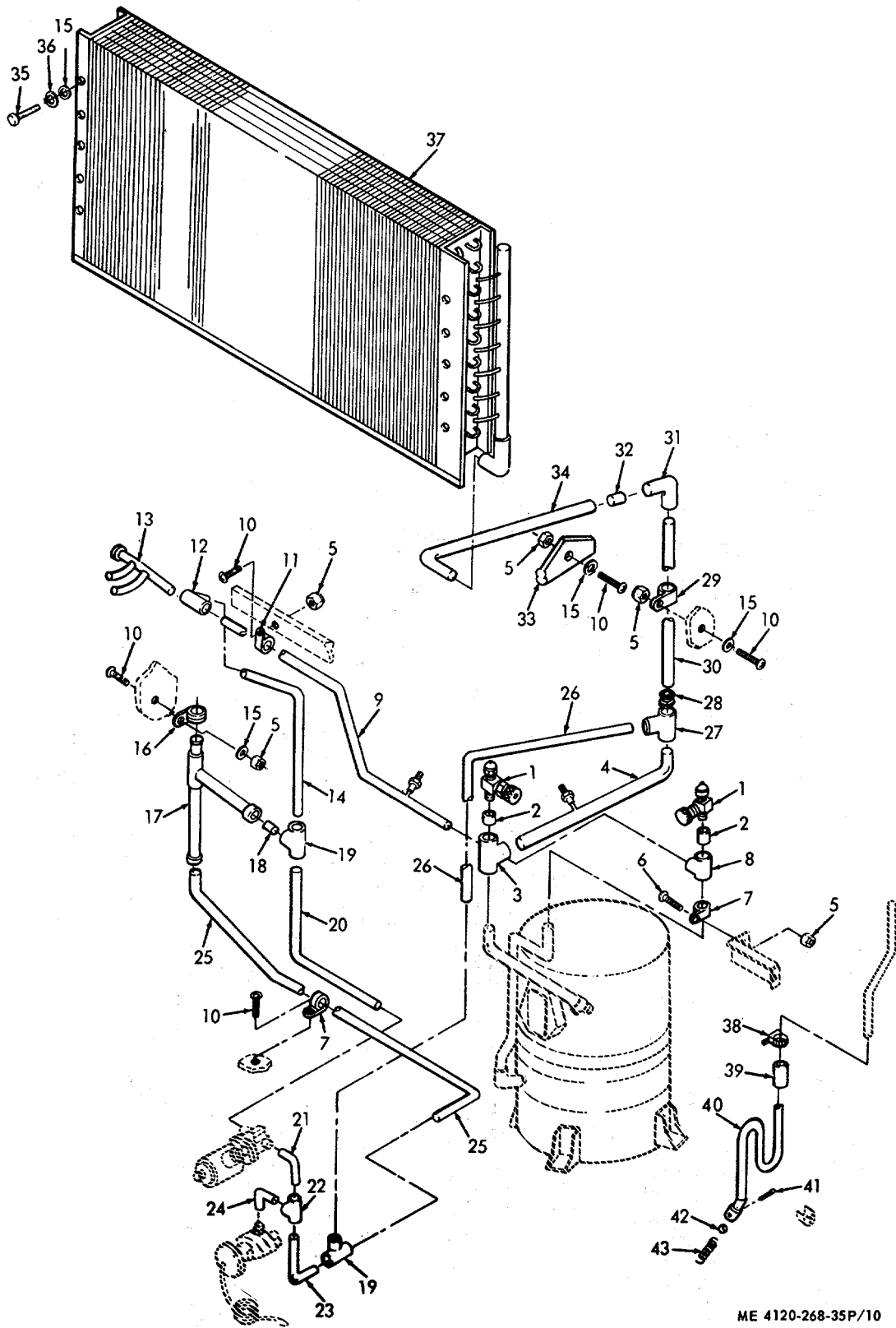
ME 4120-268-35P/7

Figure 7. Compressor



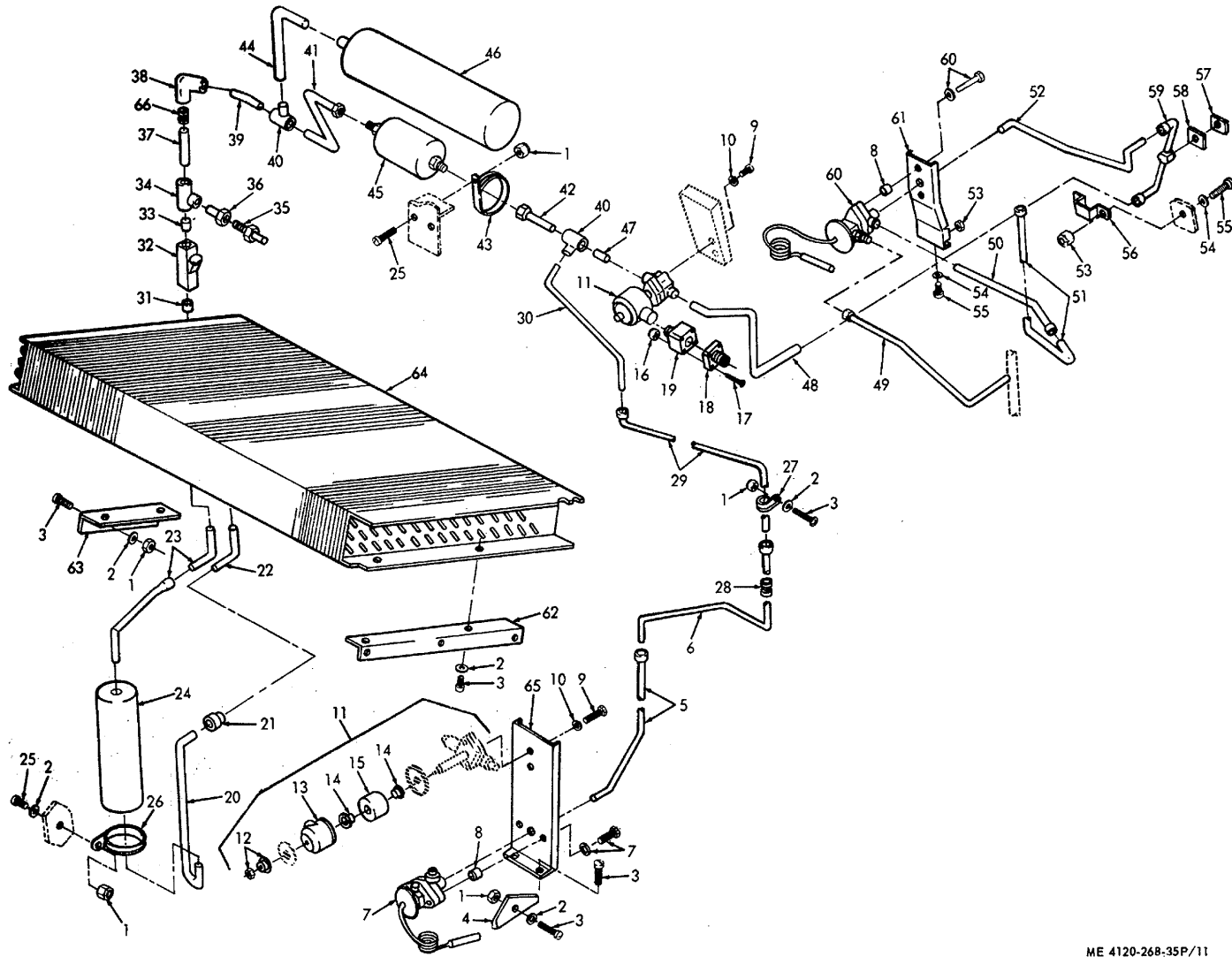
ME 4120-268-35P/8

Figure 8. Compressor Electrical Components



ME 4120-268-35P/10

Figure 10. Evaporator, Valves, Tubes and Fittings



ME 4120-268-35P/11

Figure 11. Condenser, Evaporator, Receiver, Valves, Tubes and Fittings

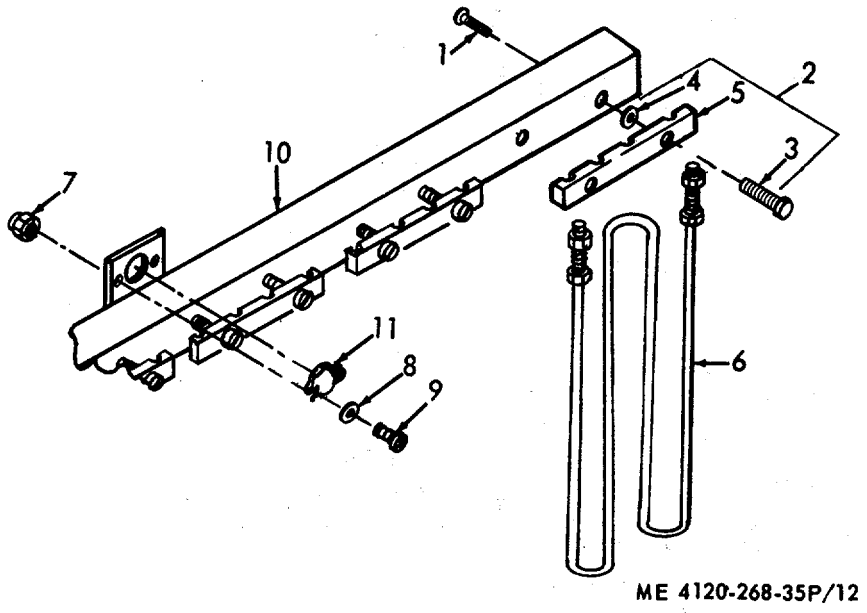
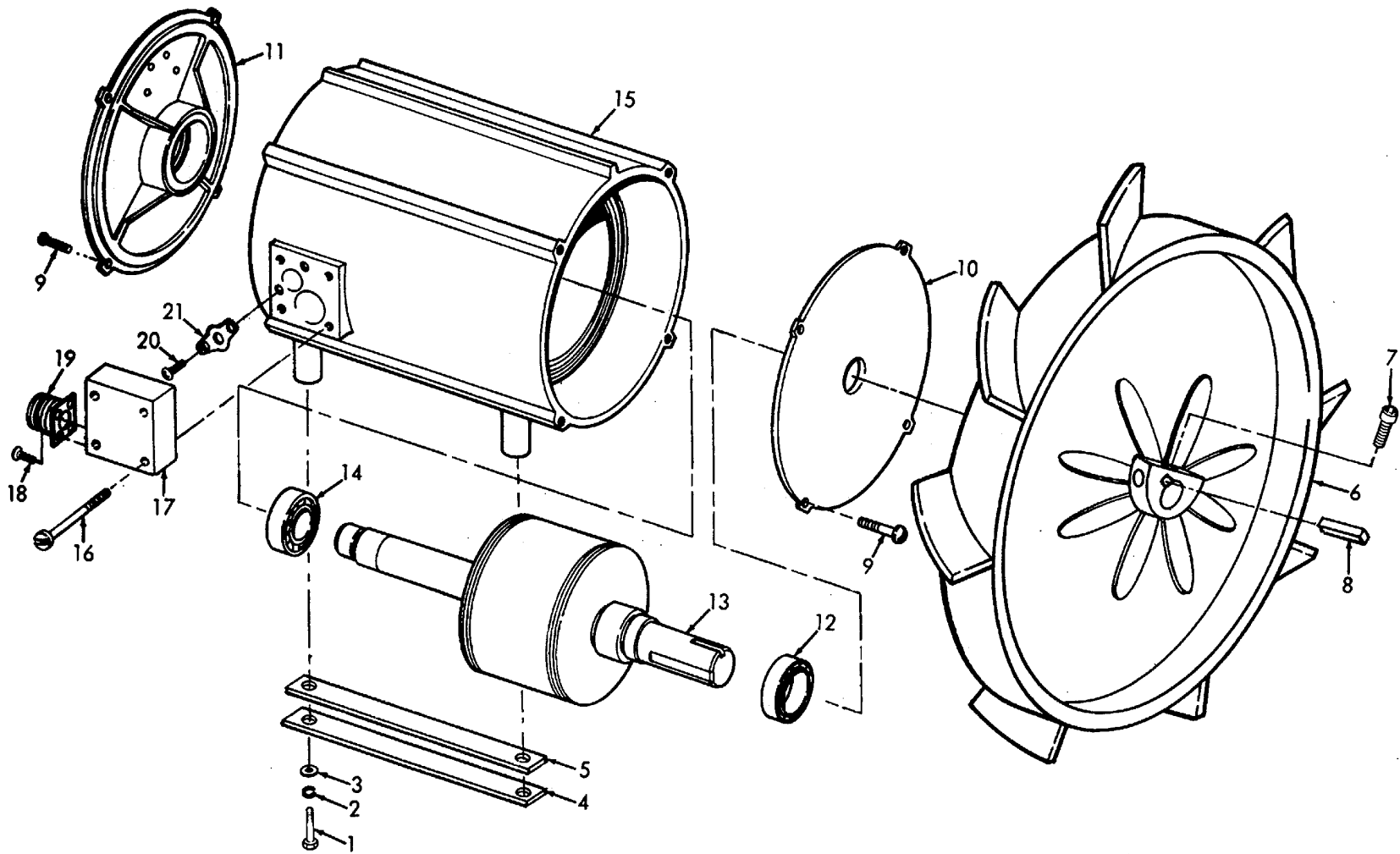
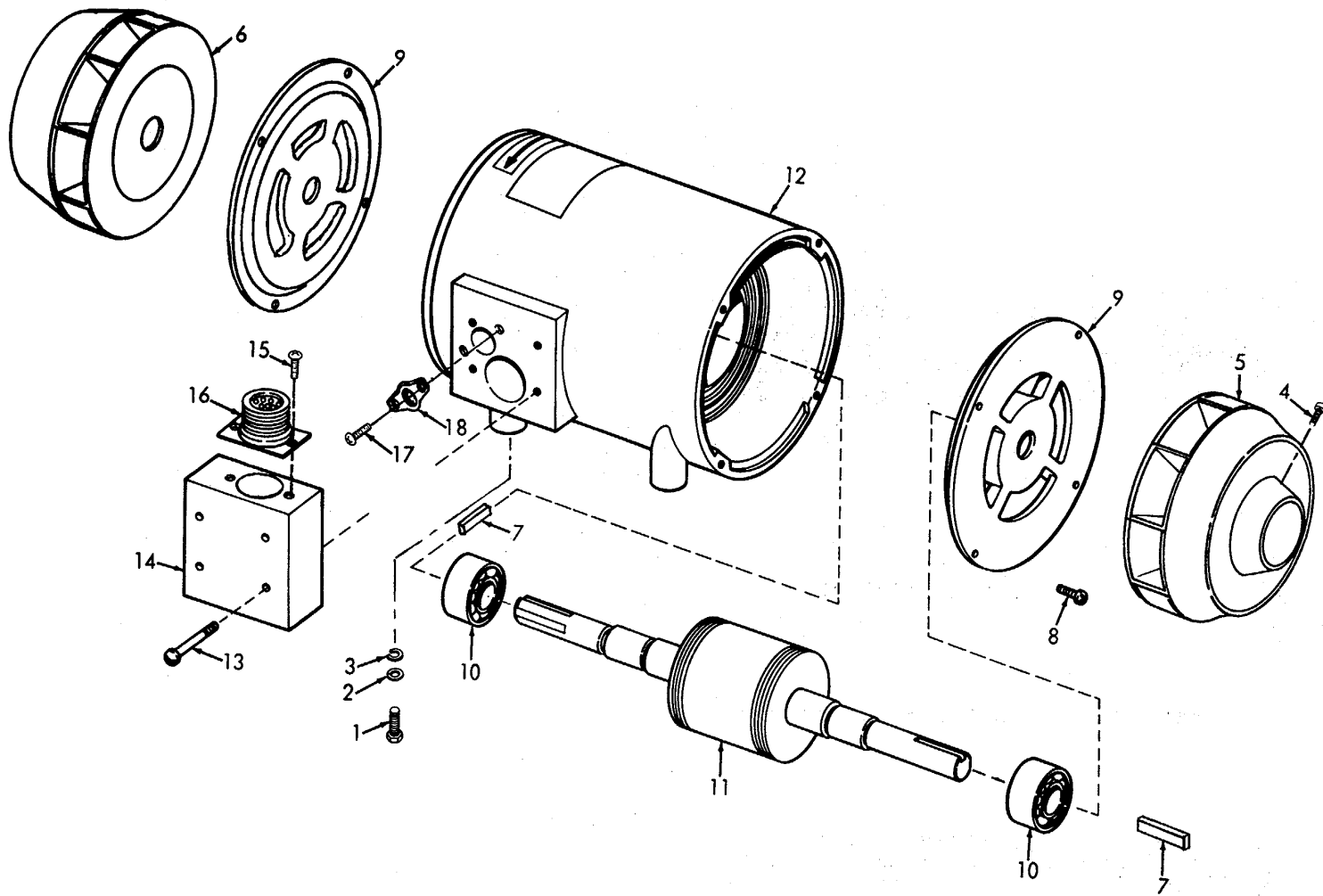


Figure 12. Heater



ME 4120-268-35P/13

Figure 13. Condenser Fan and Motor



ME 4120-268-35P/14

Figure 14. Evaporator Fan and Motor

CROSS-REFERENCE TO FIGURE AND ITEM NUMBER

<u>STOCK NUMBER</u>	<u>FIG. NO.</u>	<u>ITEM NO.</u>	<u>STOCK NUMBER</u>	<u>FIG. NO.</u>	<u>ITEM NO.</u>
4130-193-8488	1	30	5310-551-6308	8	4
4130-469-6798	1		5310-584-7800	3	18
4130-469-6759	7	14	5310-595-5437	6	3
4130-938-0q74	2	6	5310-761-6882	6	1
4130-981-6616	14	5	5310-809-4085	6	16
5305-012-0612	13	9	5310-809-8546	1	34
5305-013-2636	13	18		2	27
	14	15		5	24
5305-018-3878	4	2		6	21
5305-043-1942	3	1	5310-811-3494	2	9
	4	1	5310-889-2544	1	56
5305-175-3230	2	18		2	12
5305-206-0512	8	1		3	22
5305-206-0513	8	6		4	15
5305-206-3466	14	4	5310-889-2549	2	36
5305-206-8156	13	16		3	4
	14	13		5	4
5305-267-8985	2	33		12	7
5305-591-3320	8	3	5315-234-1856	10	41
5305-724-6799	2	20	5315-663-2329	2	22
5305-889-2999	13	20	5320-874-4477	4	6
5305-889-3000	1	57	5320-882-8388	6	12
4		14	5320-932-1972	3	12
5305-889-3001	2	13		REF	
5305-958-5451	5	16	5920-280-3175	5	20
5305-984-4979	11	17	5920-939-5442	5	21
5305-984-4988	5	1	5925-465-9743	5	3
	6	4		3	6
5305-984-6193	1	27	5930-907-8948	3	16
	3	3	5945-826-2218	5	26
			5945-976-3007	5	12
5305-984-6194	1	1	6105-253-5519	14	
	2	1	6105-253-5520	14	
	3	21	6105-401-4616	13	

SECTION V. INDEX FEDERAL STOCK NUMBER CROSS REFERENCE

CROSS-REFERENCE TO FIGURE AND ITEM NUMBER

REFERENCE NO.	MFR CODE	FIG. NO.	ITEM NO.	REFERENCE NO.	MFR CODE	FIG. NO.	ITEM. NO
AD42H	61957	3	12	C4525-417-1	60532	2	8
	61957	REF		C4525-524-1	60532	1	29
AD43H	61957	6	12	C4525-535	60532	2	34
AK41H	61957	1	4	C4525-549	60532		1
	61957	6	9	C4525-580-1	60532	12	2
AK42H	61957	4	6	C4525-588-1	60532	3	14
AL18-4-5	31234	1	30	C4525-597	60532	3	11
AL27-88-12-5	31234	2	6	C4525-689-1	60532	1	36
AN316-7R	88044	6	15	C4525-703-2	60532	1	12
AN515-6-5	88044	8	6	C4525-7344	60532	7	L4
AN515-6-8	88044	8	1	C4525-761-1	60532	1	39
AN520-10-10	88044	8	8	C4525-761-2	60532	1	40
ANS20-10-5	88044	8	3	C4525-761-3	60532	13	4
A19AGF9	92578	3	6	C4525-761-4	60532	13	5
A2301-8958	60532	4	8	C4525-762-1	60532	2	39
A2301-8959	60532	4	8	04341-1505	60532	7	
A4525-229-1	60532	2	10	04524-2058	60532	14	4
A4525-291-48	60532	5	13	D4524-6038-1	60532	2	35
A4525-291-75	60532	6	18	04525-123-1	60532	1	23
A4525-293-68	60532	3	5	D4525-128-1	60532	2	3
A4525-293-82	60532	5	30	D4525-128-2	60532	2	2
A4525-400	60532	1	14	04525-231-1	60532	1	18
A4525-403	60532	1	11	D4525-254-1	60532	12	5
A4525-498	60532	4	4	04525-493-2	60532	2	25
A4525-502	60532	4	21	D4525-533-1	60532	2	30
A4525-540-1	60532	12		D4525-579	60532	2	29
A4525-594-1	60532	3	15	D4525-792-1	60532	3	24
A4525-595-1	60532	3		D4525-794-1	60532	2	32
	60532	3	3	E4525-617	60532	2	11
BAL25	60532	10	42	FAN183	60532	14	5
BH525-496-1	60532	5		FAN296	60532	14	6
B4525-196-2	60532	1	59	FAN297	60532	13	6
B4525-196-3	6Q532	1	58	FR30SNO-24	06151	5	12
60532		2	14	F09B25OV16-IOA	81349	5	20
	60532	8	7	F39155-08	15653	1	5
B4525-244-1	60532	2	41	F39155-3	15653	1	6
B4525-249-21	60532	1		G1152	79499	2	40
B4525-275	60532	6		HSE45	60532	10	39
B4525-280	60532	10	40	INS128	60532	7	13
B4525-307-24	6032	2	16	KAWS	71400	5	21
B4525-316-1	60532	1	35	MS15795-708	96906	3	18
B4525-317-1	60532	1	35	MS171499	96906	2	22
B4525-338-2	60532	5		MS20066-146	96906	14	7
B4525-368-1	60532	14		MS20066-147	96906	13	8
B4525-368-2	60532	14		MS21044NQ4	96906	5	10
B4525-386-1	60532	4	11	MS21044NH8	96906	2	9
B4525-387-1	60532	4			96906	420	
B4525-393-1	60532	1	21	MS21044N04	96906	11	16
B4525-394	60532	1		MS21045-06	96906	1	56
B4525-459	60532	5	28		96906	2	12
B4525-500	60532	4	18		96906	3	22
B4525-525	60532	1	41		96906	4	15
B4525-529	60532	12	10	MS21045-08	96906	2	36
B4525-537-1	60532	1	7		96906	3	4
B4525-538	60532	2	37		96906	5	4
B4525-539	60532	2			96906	12	7
B4525-590	60532	3	23	MS2LQ45-3	96906	2	26
B4525-596	60532	3			96906	3	20
B4525-727	60532	8	5		96906	5	29
B4525-749	60532	2	5	MS21045-4	96906	2	15
B4525-770	60532	1	13	MS21062-06	96906	6	10
COV351	60532	7	12	MS21318-14	96906	2	18
C13853-1420	78553	4	13	MS219190G6	96906	3	10
C4525-116	60532	11	19	MS227183-L	96906	14	2
C4525-124	60532	1		MS24665-155	96906	10	41
C4525-1255-17	6Q532	4	12	MS27131-19K	96906	6	14
C4525-203	60532	5	2	MS27183-12	96906	1	38
C4525-206-1	60532	3	13		96906	2	23
C4525-208-1	60532	2	19		96906	13	3
C4525-228-1	60532	2	21	MS27T83-16	96906	6	16
C4525-241-21	60532	1	60	MS27183-6	96906	6	5
C4525-266-1	60532	6	11	MS27183-7	96906	1	2
C4525-268-1	60532	6	6		96906	2	7
C4525-269	60532	6	13		96906	5	B
C4525-270	60532	6			96906	12	8
C4525-28L	60532	10		MS27183-8	96906	1	34
C4525-326-1	60S32	8	1		96906	2	27
C4525-354	60532	4	16		96906	5	24
C4525-391-1	60532	1	20		96906	6	21
C4525-392-1	60532	1	19	MS3102RI2S3P	96906	11	18
C4525-407	60532	5	9	MS3102R14S7P	96906	14	16
C4525-408-2	60532	5		MS3102R16-IOP	96906	13	19

SECTION IV. INDEX FEDERAL STOCK NUMBER CROSS REFERENCE
CROSS-REFERENCE TO FIGURE AND ITEM NUMBER

REFERENCE NO.	MFR CODE	FIG. NO.	ITEM NO.	REFERENCE NO.	MFR CODE	FIG. NO.	ITEM NO.
MS35190-239	96906	5	16	02-010795-001	64731	13	15
MS35206-214	96906	5	11	02-010795-002	64731	13	13
MS35206-217	96906	13	20	02-010809-001	64731	14	12
	96906	14	17	02-010809-002	64731	14	11
MS35206-222	96906	11	17	02-1 0794-001	64731	13	15
MS35206-228	96906	5	1	10-006	12881	6	7
	96906	6	4		12881	REF	
MS35206-230	96906	1	57	12-11-203-12	94222	4	9
	96906	2	13	12-11-504-12	94222	1	17
	96906	4	14	12-11-607-12	94222	12	3
MS35206-234	96906	3	21	12-11-613-12	94222	1	15
MS35206-245	96906	1	27	12-11014-12	94222	1	16
	96906	3	3		94222	4	10
	96906	4	19		94222	12	4
	96906	5	6	12-1102013	94222	4	7
MS35206-246	96906	1	1	22010	75382	5	25
	96906	2	1	244-16	71286	1	26
	96906	12	9	2819	71400	5	18
MS35206-247	96906	1	10	3MP25	93781	11	14
MS35206-249	60532	5	14	3502-18-36S	78189	2	24
MS35207-263	96906	2	38	35566	22694	4	17
	96906	3	8	40S37-7	71286	1	22
	96906	5	27	4002N	71286	1	24
	96906	12	1	4385-005-01	71400	12	6
MS35207-264	96906	1	32	4515	71400	5	19
	96906	2	28	4715-22	64731	14	
	96906	6	19	5JX100MODIFIED	56289	6	17
	96906	11	3	60SJJ2502-6	75382	5	15
MS35207-266	96906	5	22	7015-4	64731	13	
MS35207-267	96906	3	17	7025-6	64731	13	
	96906	5	31	71-212-4MG6	74193	5	3
MS35224-65	96906	14	8	71-212-5MG6	74193	5	3
MS35242-73	96906	13	9	757230	93781	11	15
MS35336-9	96906	5	17	812-2	75382	8	9
MS35338-41	96906	8	2	8912K216	15605	3	16
MS35338-42	96906	1	28	9242P	64731	13	17
	9690 6	2	4	926303	64731	14	
MS35338-43	96906	5	7	9315P	64731	14	14
	96906	1	33	9565H2B	15605	5	5
	96906	3	9	9565H94	15605	5	26
	96906	5	23				
	96906	6	20				
MS35338-45	96906	13	2				
	96906	14	3				
MS35340-43	96906	8	4				
MS35490-1	96906	3	7				
MS35490-34	96906	8	10				
MS35650-102	96906	3	19				
MS 3 5842Z-11	96906	10	38				
MS35914-108	96906	4	5				
MS51964-51	96906	2	20				
M516-2	96906	6	1				
MS90725-31	96906	14	1				
M59D725-33	96906	13	1				
M4S90726-18	96906	2	33				
MWH33AO	82646	13	21				
MWH39AO	82646	14	18				
MWJ33AO	82646	14	18				
NAS1297-4-4	80205	2	17				
NAS11297-4-6	80205	2	31				
PLV128	60532	1	5				
R8175	86797	3	2				
R4G	71286	1	25				
SCR325	60532	13	7				
SPG55	93232	10	43				
SPG58	60532	7	11				
SS0257	58849	6	8				
TYPECWA1249	82647	12	11				
XX78328-20	90763	1	3				
003-141	93781	11	12				
0B3-27	93781	L I	13				
OL-005248-084	64731	14	10				
01-005248-085	64731	13	12				
01-005248-086	64731	13	14				
02-009312-000	64731	14	9				
02-009486-001	64731	14	12				
02-009922-000	64731	13	10				
02-009923-000	64731	13	11				
02-010391-009	64731	14	11				
02-OL0794-002	64731	13	13				

ITEMS NOT ILLUSTRATED

				STOCK NUMBER		GROUP NUMBER
				5320-882-8388		01
				5320-932-1972		01
				5935-578-2742		08
				5935-816-8644		08
				5340-598-0597		08
				5970-082-3942		08
				5970-990-9912		08
				REFERENCE NO.	MFG CODE	GROUP NUMBER.
				A4525-261	60532	01
				B4525-539	60532	08
				B4525-612	60532	08
				B4525-613	60532	08
				B4525-614	60532	08
				B4525-615	60532	08
				B4525-616	60532	01
				C4525-209-1	60532	01
				C4525-211-1	60532	01
				C4525-220-1	60532	01
				C4525-221-1	60532	01
				C4525-277-1	60532	01
				C4525-763-1	60532	01
				C4525-764-1	60532	01
				C4525-765-1	60532	01
				C4525-767-1	60532	01
				C4525-768-1	60532	01
				D4525-141-1	60532	01
				P LT199	60532	05

By Order of the Secretary of the Army:

Official:

KENNETH G. WICKHAM,
*Major General, United States Army,
The Adjutant General.*

W. C. WESTMORELAND,
*General, United States Army,
Chief of Staff.*

Distribution:

To be distributed in accordance with DA Form 12-25, Sec III (qty rqr Block #553), Operator requirements for Air Conditioners, 36,000 BTU, Floor Mounting.

* U.S. GOVMENT PRINTING OFFICE : 1992 0 - 311-831 (60606)

RECOMMENDED CHANGES TO EQUIPMENT TECHNICAL PUBLICATIONS



THEN... JOT DOWN THE DOPE ABOUT IT ON THIS FORM, CAREFULLY TEAR IT OUT, FOLD IT AND DROP IT IN THE MAIL!

SOMETHING WRONG WITH THIS PUBLICATION?

FROM: (PRINT YOUR UNIT'S COMPLETE ADDRESS)

DATE SENT

PUBLICATION NUMBER

PUBLICATION DATE

PUBLICATION TITLE

BE EXACT... PIN-POINT WHERE IT IS

PAGE NO.	PARA-GRAPH	FIGURE NO.	TABLE NO.
----------	------------	------------	-----------

IN THIS SPACE TELL WHAT IS WRONG AND WHAT SHOULD BE DONE ABOUT IT:

TEAR ALONG PERFORATED LINE

PRINTED NAME, GRADE OR TITLE, AND TELEPHONE NUMBER

SIGN HERE:

DA FORM 2028-2 JUL 79

PREVIOUS EDITIONS ARE OBSOLETE.

P.S.—IF YOUR OUTFIT WANTS TO KNOW ABOUT YOUR RECOMMENDATION MAKE A CARBON COPY OF THIS AND GIVE IT TO YOUR HEADQUARTERS.

THE METRIC SYSTEM AND EQUIVALENTS

WEIGHT MEASURE

1 Centimeter = 10 Millimeters = 0.01 Meters = 0.3937 Inches
 1 Meter = 100 Centimeters = 1000 Millimeters = 39.37 Inches
 1 Kilometer = 1000 Meters = 0.621 Miles

WEIGHTS

1 Gram = 0.001 Kilograms = 1000 Milligrams = 0.035 Ounces
 1 Kilogram = 1000 Grams = 2.2 lb.
 1 Metric Ton = 1000 Kilograms = 1 Megagram = 1.1 Short Tons

LIQUID MEASURE

1 Milliliter = 0.001 Liters = 0.0338 Fluid Ounces
 1 Liter = 1000 Milliliters = 33.82 Fluid Ounces

SQUARE MEASURE

1 Sq. Centimeter = 100 Sq. Millimeters = 0.155 Sq. Inches
 1 Sq. Meter = 10,000 Sq. Centimeters = 10.76 Sq. Feet
 1 Sq. Kilometer = 1,000,000 Sq. Meters = 0.386 Sq. Miles

CUBIC MEASURE

1 Cu. Centimeter = 1000 Cu. Millimeters = 0.06 Cu. Inches
 1 Cu. Meter = 1,000,000 Cu. Centimeters = 35.31 Cu. Feet

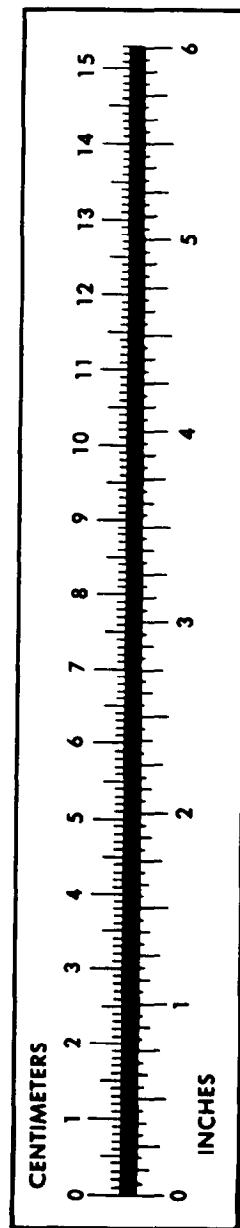
TEMPERATURE

$5/9(^{\circ}\text{F} - 32) = ^{\circ}\text{C}$
 212° Fahrenheit is equivalent to 100° Celsius
 90° Fahrenheit is equivalent to 32.2° Celsius
 32° Fahrenheit is equivalent to 0° Celsius
 $9/5^{\circ}\text{C} + 32 = ^{\circ}\text{F}$

APPROXIMATE CONVERSION FACTORS

TO CHANGE	TO	MULTIPLY BY
Inches	Centimeters	2.540
Feet	Meters	0.305
Yards	Meters	0.914
Miles	Kilometers	1.609
Square Inches	Square Centimeters	6.451
Square Feet	Square Meters	0.093
Square Yards	Square Meters	0.836
Square Miles	Square Kilometers	2.590
Acres	Square Hectometers	0.405
Cubic Feet	Cubic Meters	0.028
Cubic Yards	Cubic Meters	0.765
Fluid Ounces	Milliliters	29.573
its	Liters	0.473
arts	Liters	0.946
allons	Liters	3.785
Ounces	Grams	28.349
Pounds	Kilograms	0.454
Short Tons	Metric Tons	0.907
Pound-Feet	Newton-Meters	1.356
Pounds per Square Inch	Kilopascals	6.895
Miles per Gallon	Kilometers per Liter	0.425
Miles per Hour	Kilometers per Hour	1.609

TO CHANGE	TO	MULTIPLY BY
Centimeters	Inches	0.394
Meters	Feet	3.280
Meters	Yards	1.094
Kilometers	Miles	0.621
Square Centimeters	Square Inches	0.155
Square Meters	Square Feet	10.764
Square Meters	Square Yards	1.196
Square Kilometers	Square Miles	0.386
Square Hectometers	Acres	2.471
Cubic Meters	Cubic Feet	35.315
Cubic Meters	Cubic Yards	1.308
Milliliters	Fluid Ounces	0.034
Liters	Pints	2.113
Liters	Quarts	1.057
ers	Gallons	0.264
ms	Ounces	0.035
ograms	Pounds	2.205
Metric Tons	Short Tons	1.102
Newton-Meters	Pounds-Feet	0.738
Kilopascals	Pounds per Square Inch	0.145
ometers per Liter	Miles per Gallon	2.354
ometers per Hour	Miles per Hour	0.621



PIN: 005781-001